



ÀUREAMATERIA

PIEDRA NATURAL PARA LA ARQUITECTURA



ÀUREA MATERIA



www.aureamateria.com

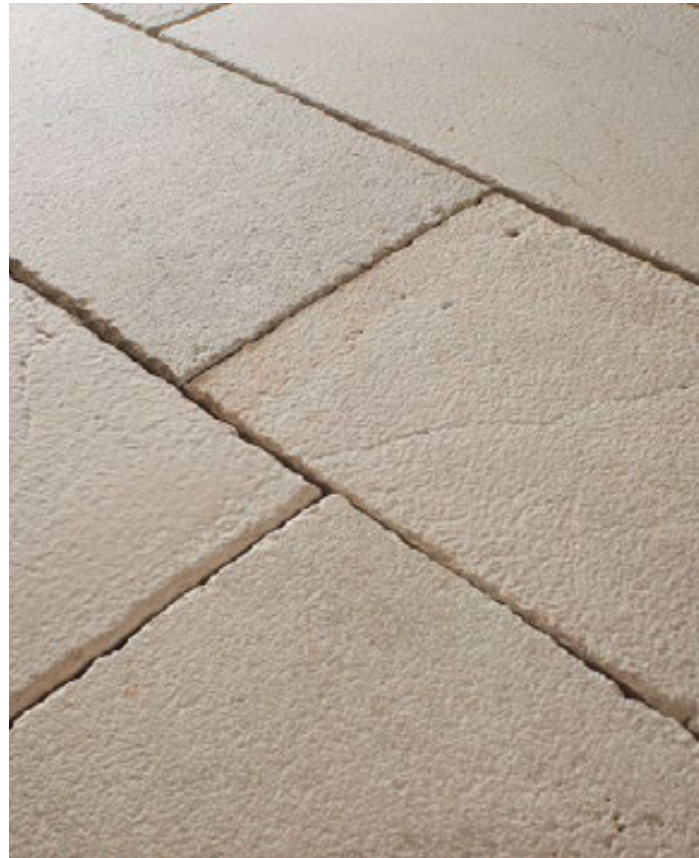
PIEDRAS

PROVENÇAL ANTIC	4
URDAIBAI ANTIC	8
MARINA ANTIC	10
ÁMBAR ANTIC	14
LUARCA	18
VORAMAR ANTIQUE	22
COLOMERA ANTIQUE	26
CARCASSONA ANTIQUE	28
MIRAVET ANTIQUE	32
TERRA	34
STRATA	38
GAIA	40
PEDRA BLAVA	42
GATZARA ANTIC	48
CAYÈNNE	54
TÍVOLI	56
MARINA	58
PETRA	62
TOSSAL	68
FÓSIL	72
CLARA	96

INSPIRACIÓN

INTERIORES-EXTERIORES	98
-----------------------	----

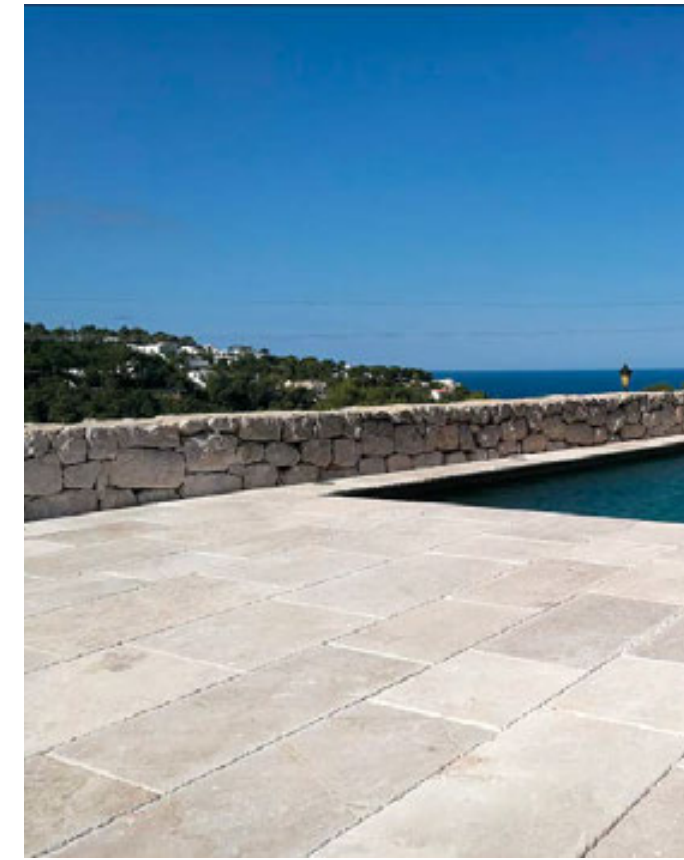
PROVENÇAL ANTIC



PROVENÇAL ANTIC



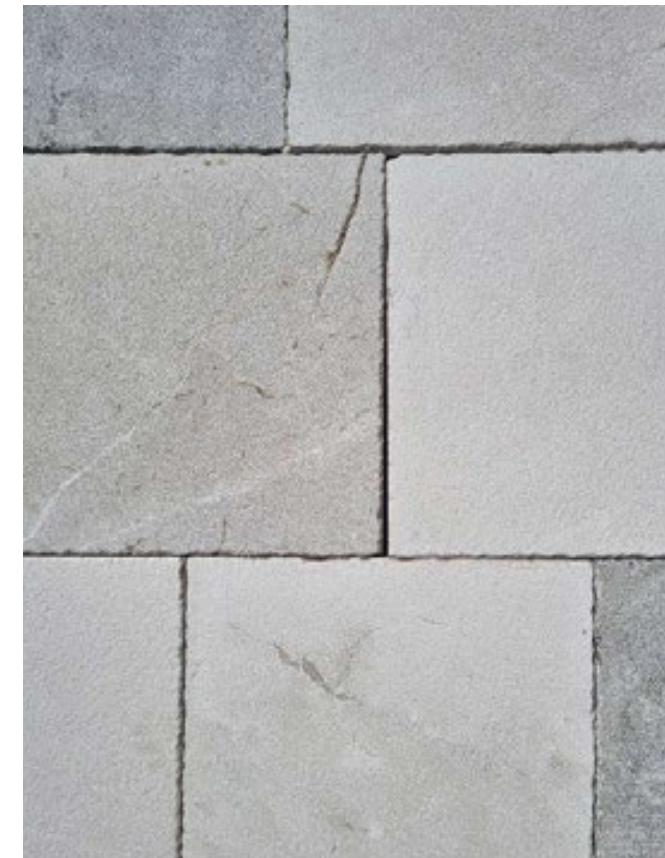
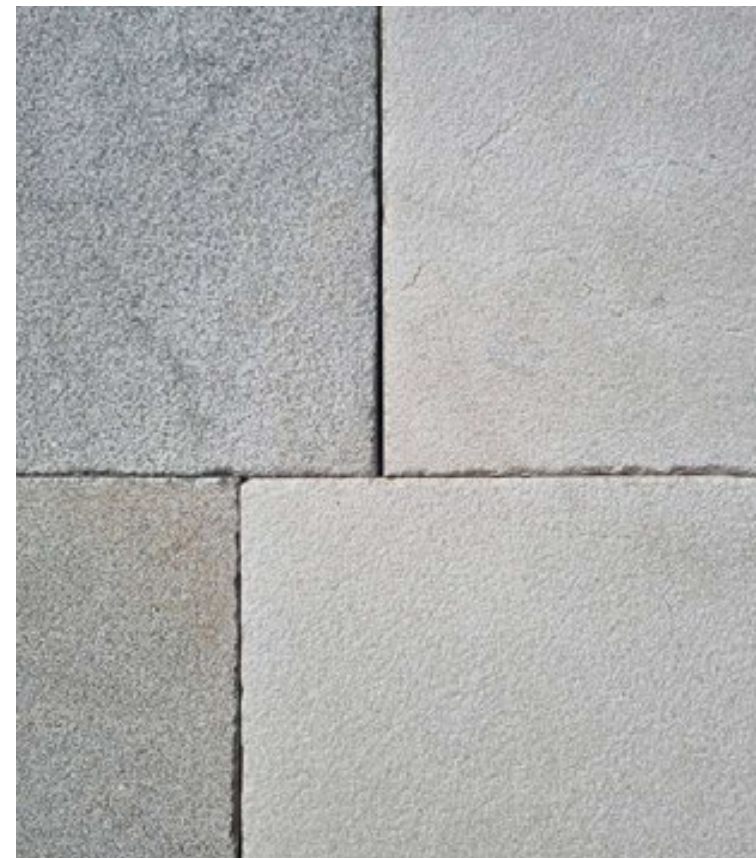
ÀUREA MATERIA



URDAIBAI ANTIC



ÄUREAMATERIA



MARINA ANTIC



À U R E A M A T E R I A



MARINA ANTIC



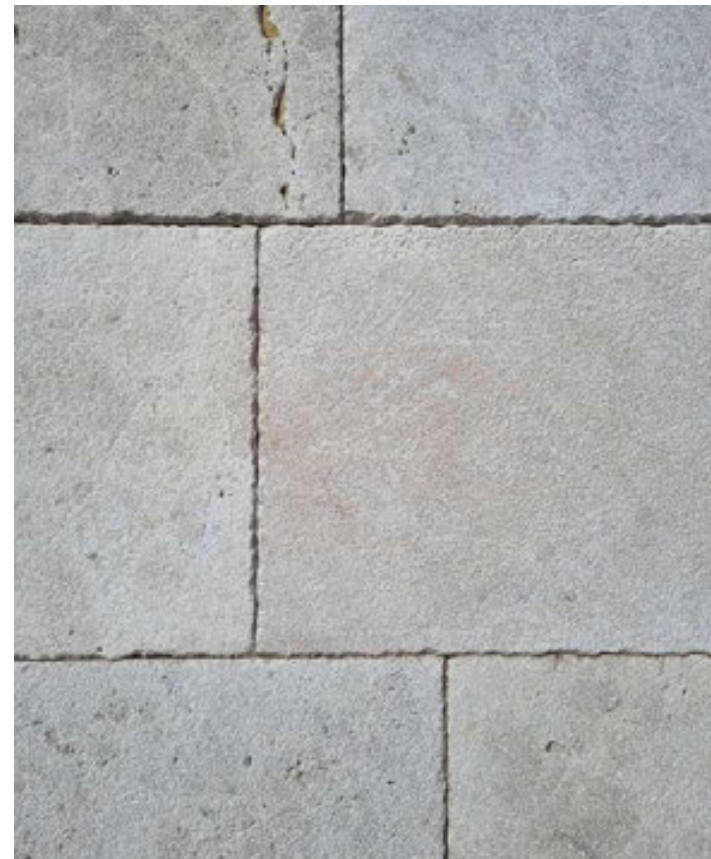
ÀUREA MATERIA



ÁMBAR ANTIC



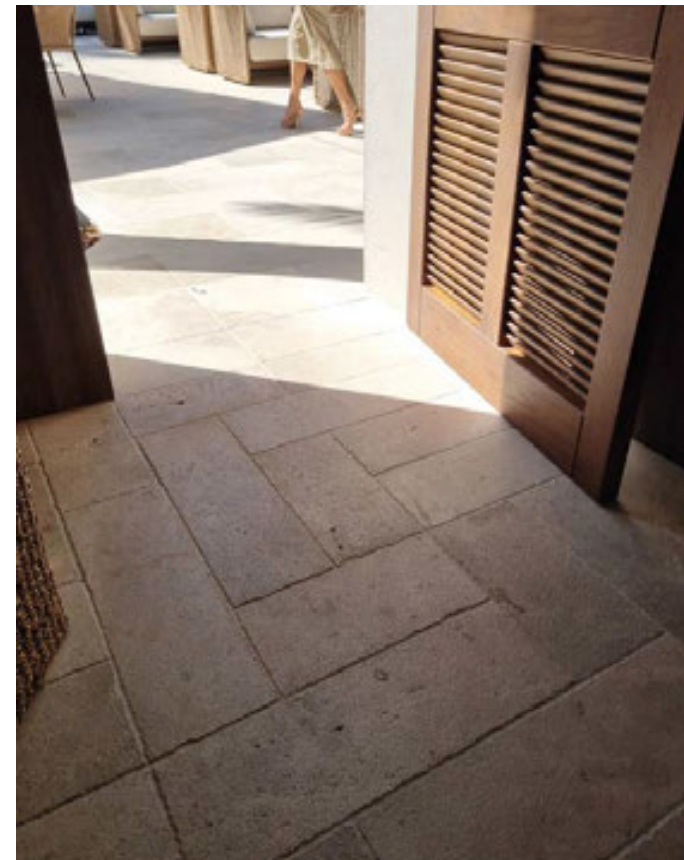
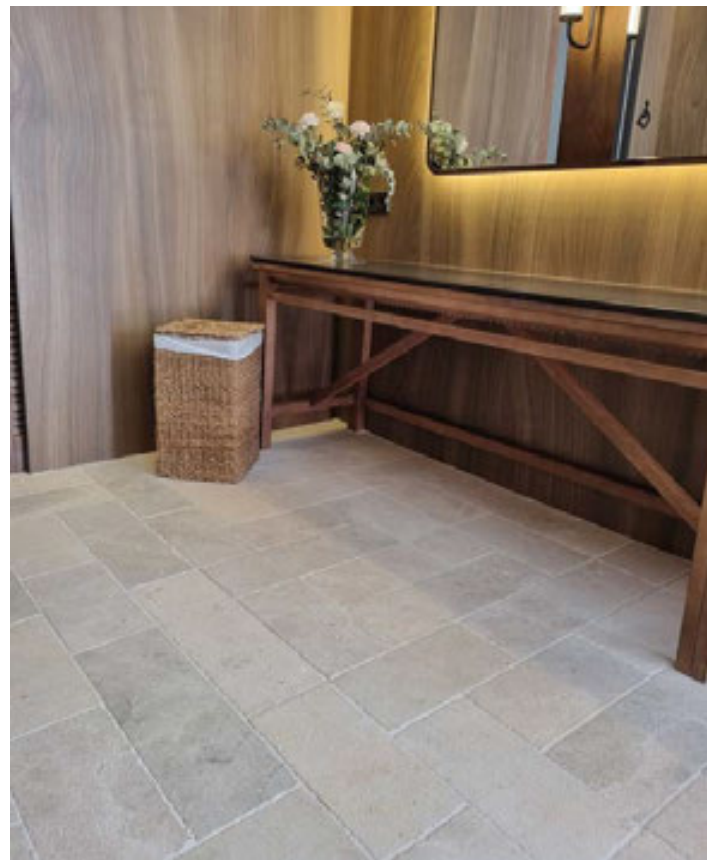
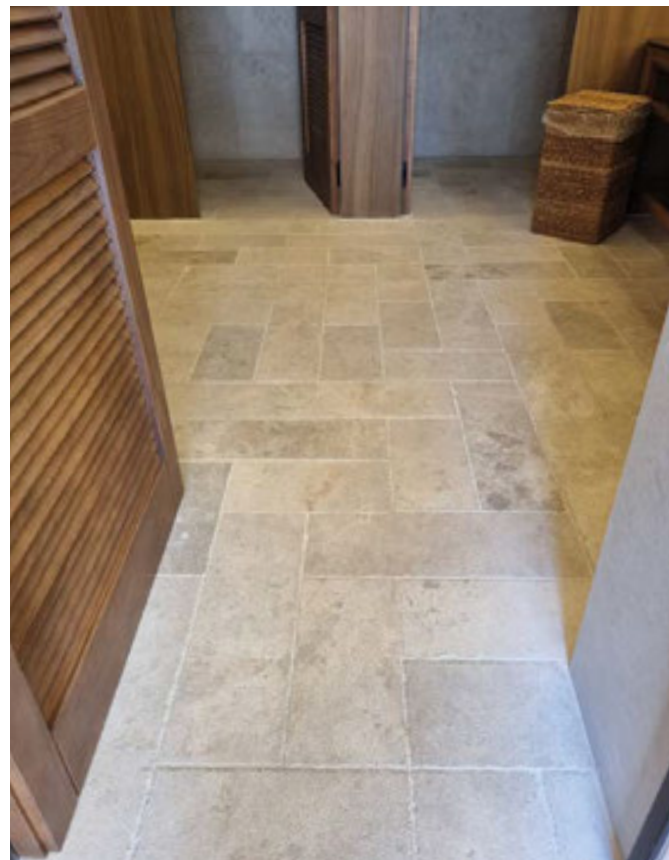
ÁUREA MATERIA



ÁMBAR ANTIC



ÁUREA MATERIA

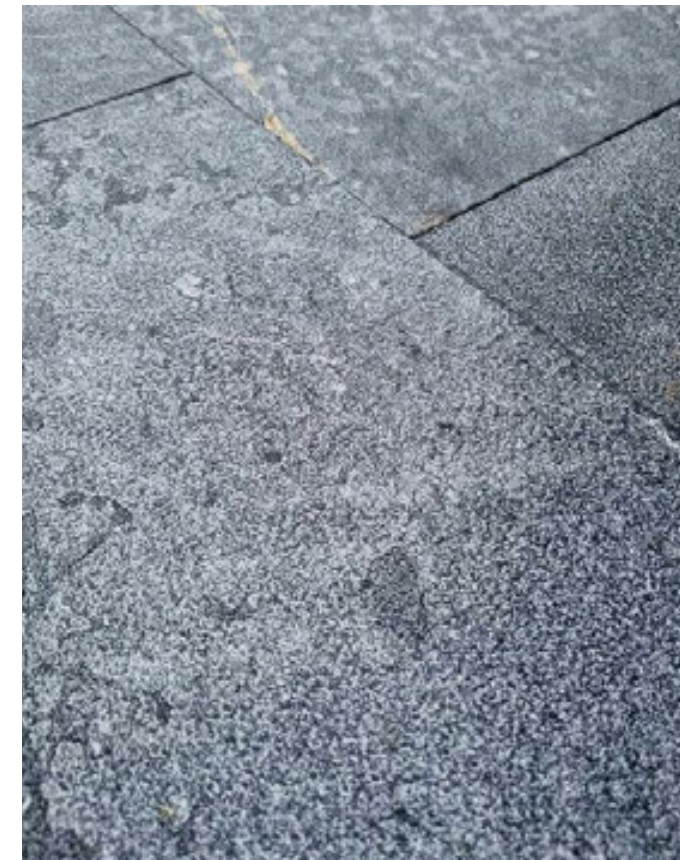
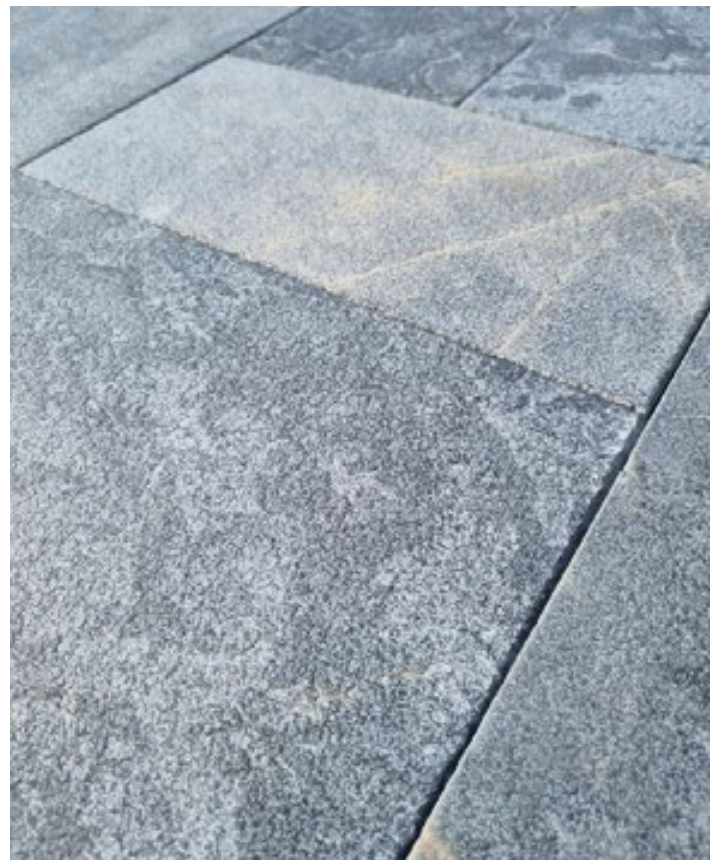


LUARCA

LUARCA ANTIC



AUREAMATERIA



LUARCA

LUARCA NATURE

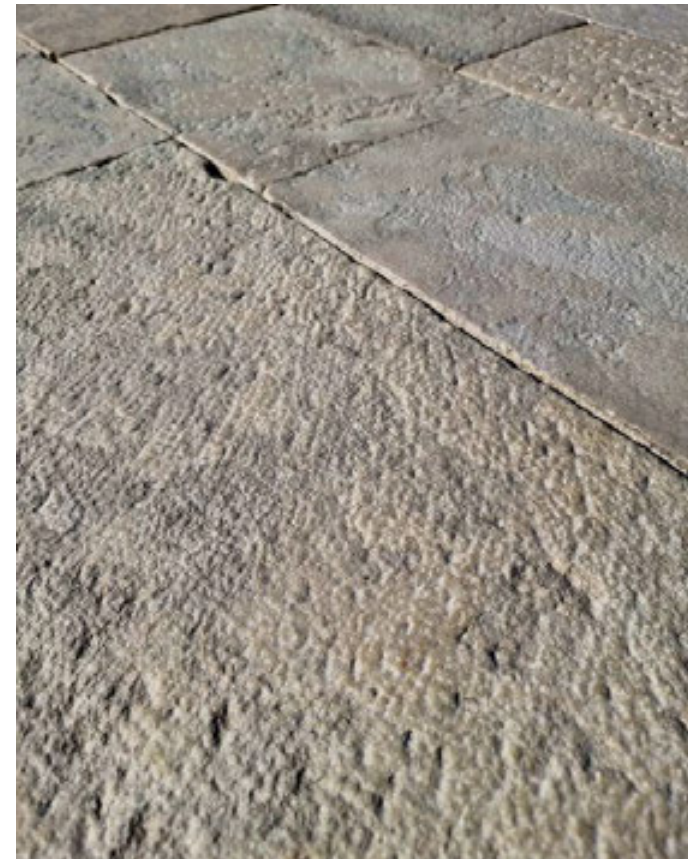
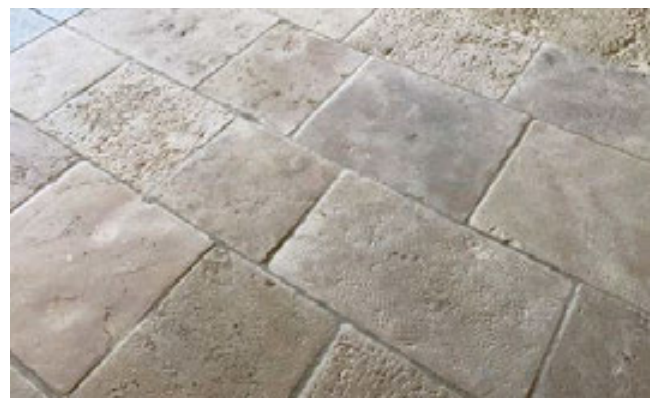
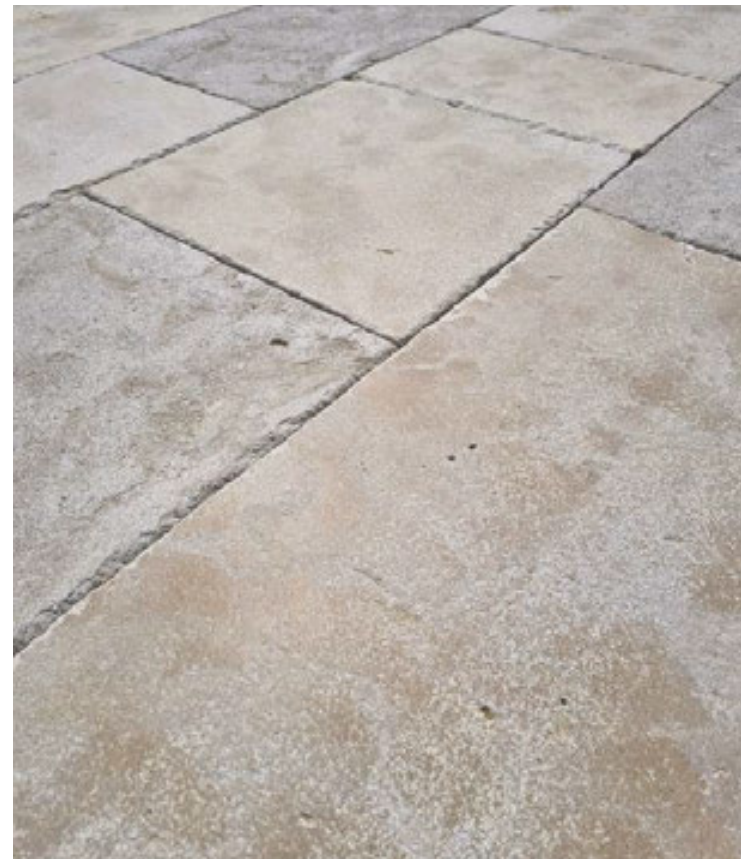
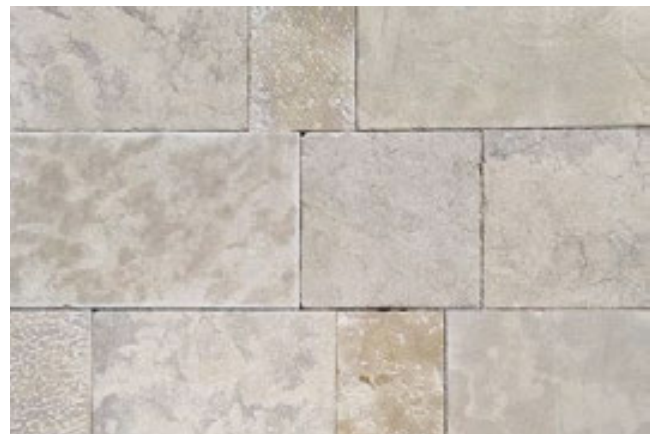


Ä U R E A M A T E R I A

VORAMAR ANTIQUE



AUREAMATERIA



VORAMAR ANTIQUE



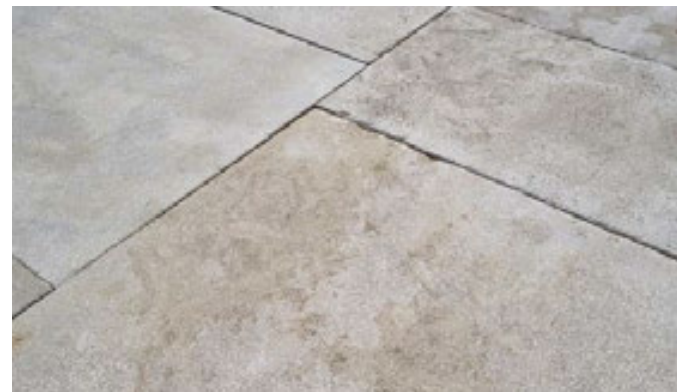
ÄUREAMATERIA



COLOMERA ANTIQUE



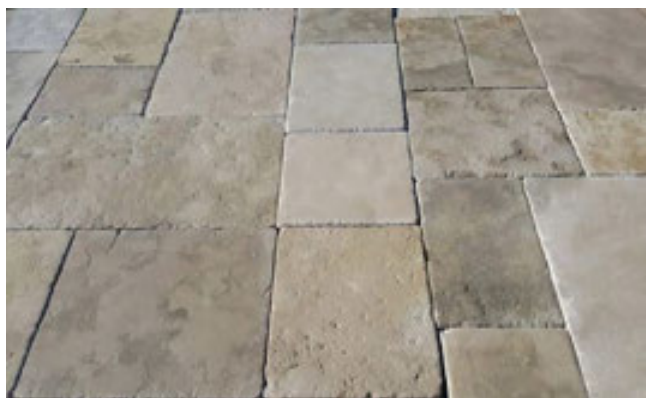
ÄUREAMATERIA



CARCASSONA ANTIQUE



ÄUREAMATERIA



CARCASSONA ANTIQUE



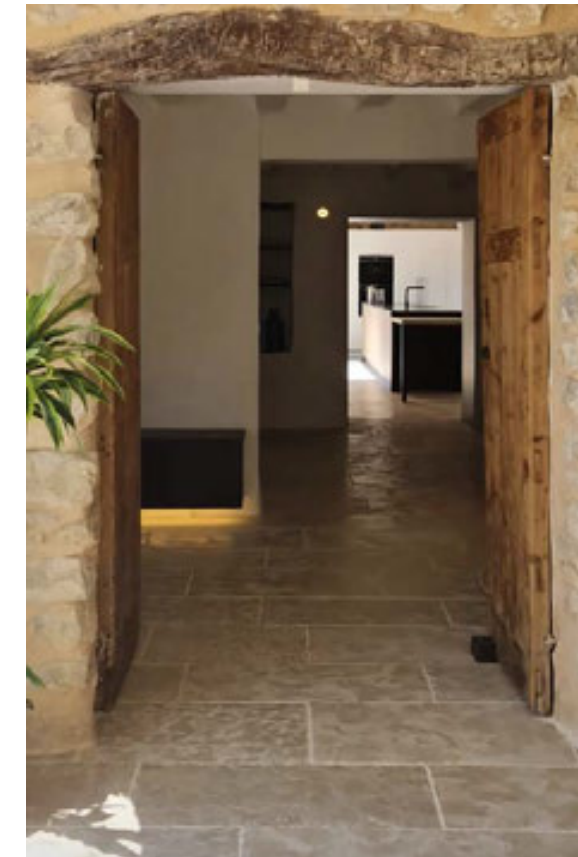
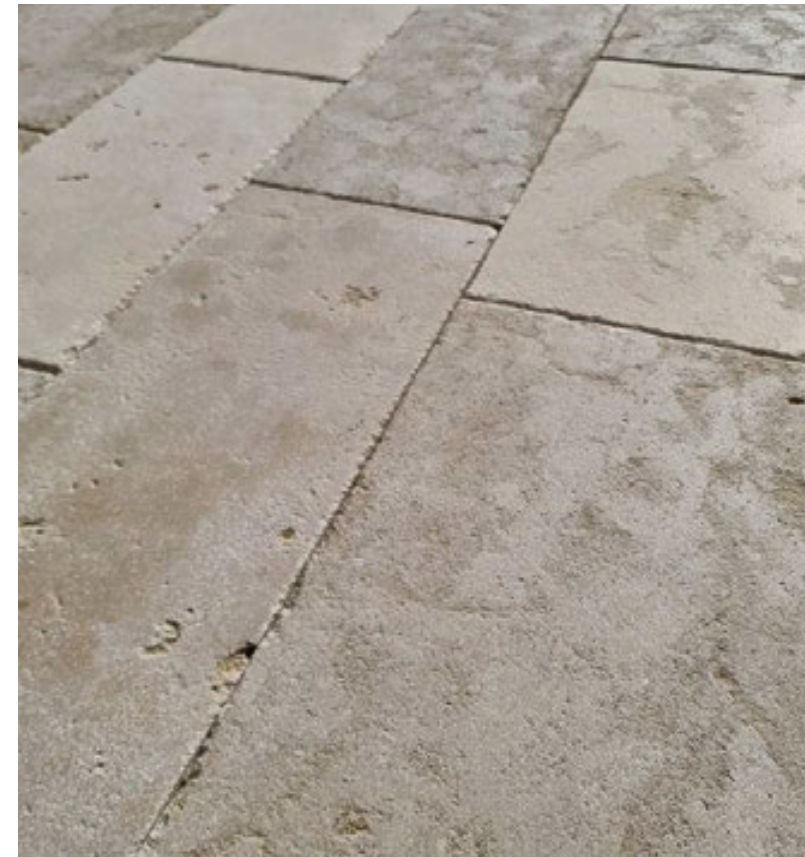
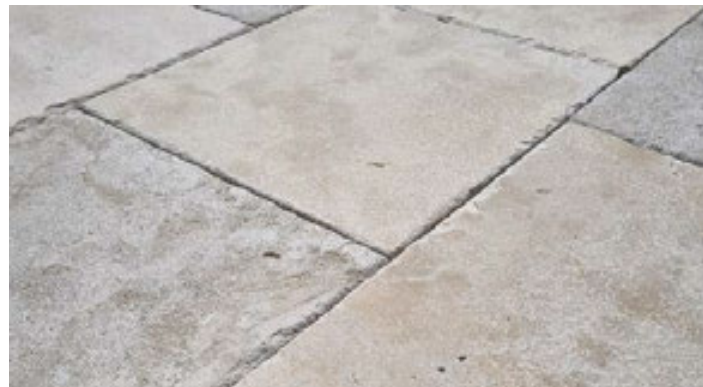
ÄUREAMATERIA



MIRAVET ANTIQUE



ÄUREA MATERIA



TERRA



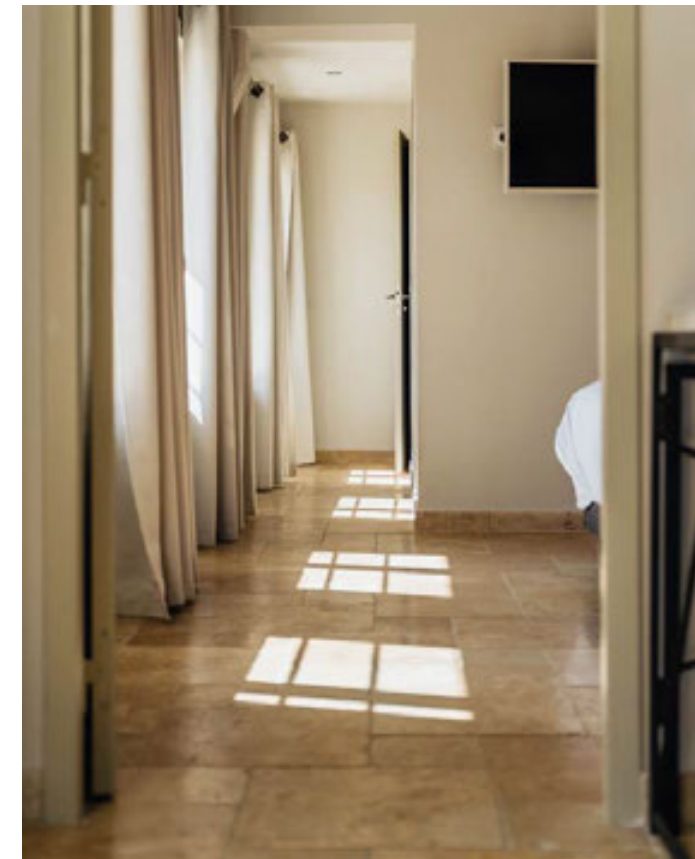
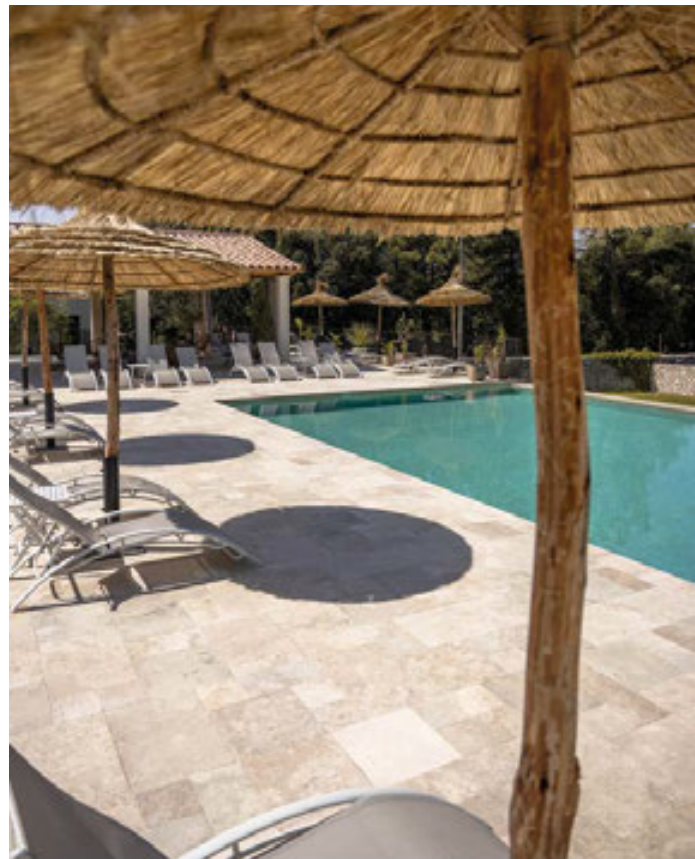
ÄUREA MATERIA



TERRA



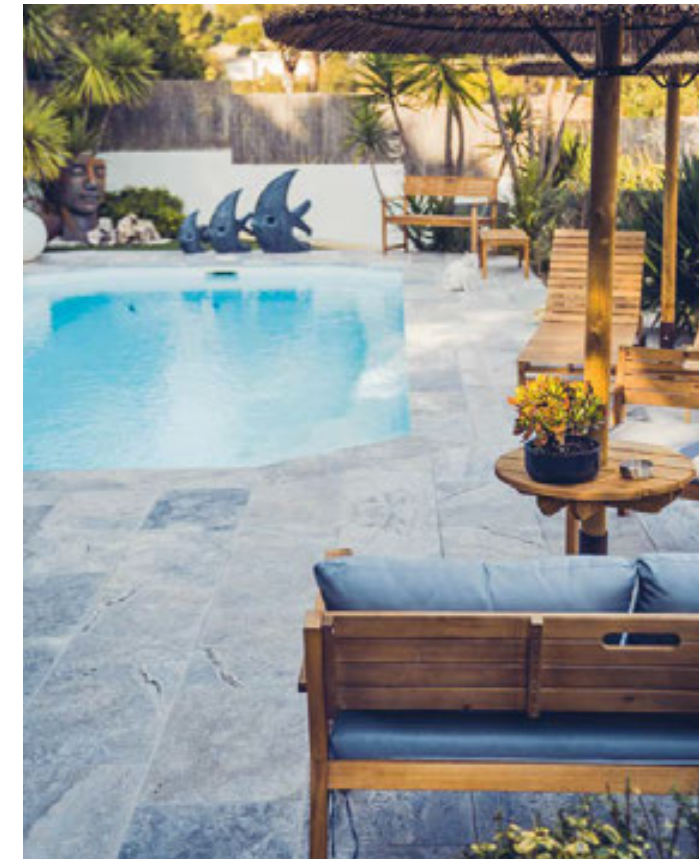
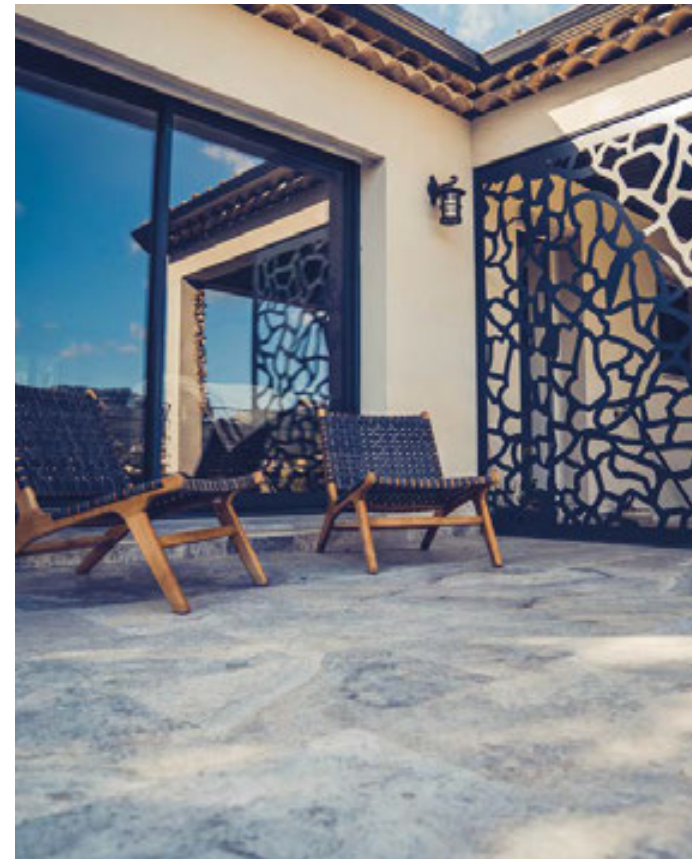
ÄUREAMATERIA



STRATA



ÁUREA MATERIA





PEDRA BLAVA

PEDRA BLAVA ANTIC



ÄUREA MATERIA

PEDRA BLAVA

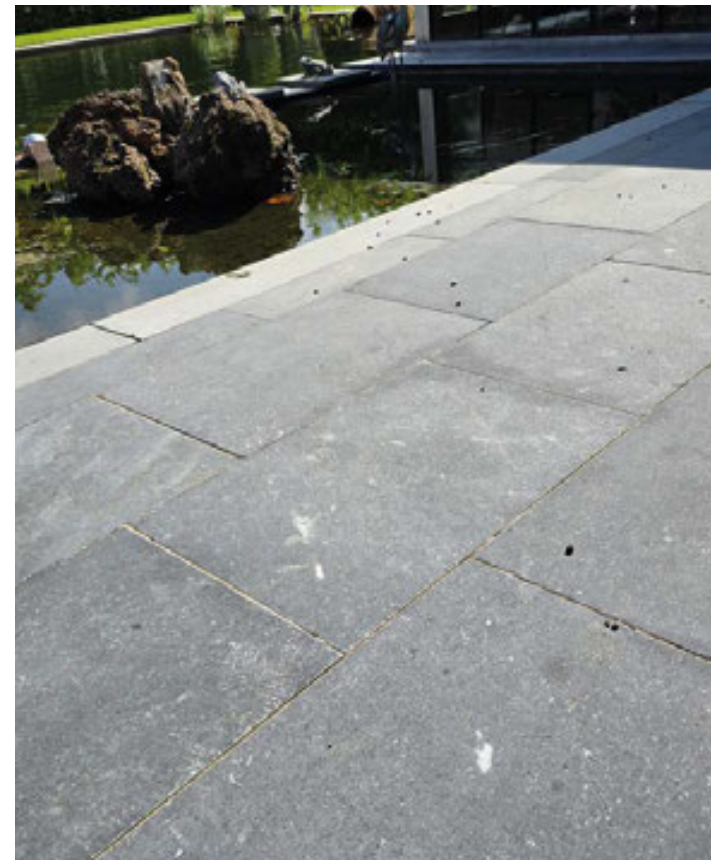
PEDRA BLAVA ANTIC



ÄUREA MATERIA

PEDRA BLAVA

PEDRA BLAVA CONTEMPO

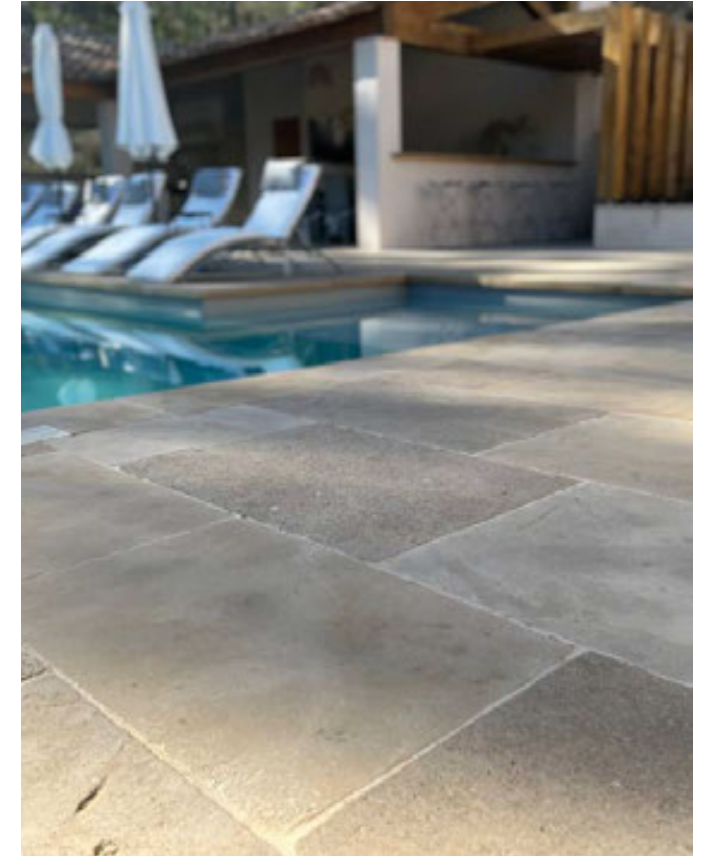


ÄUREA MATERIA

GATZARA ANTIC



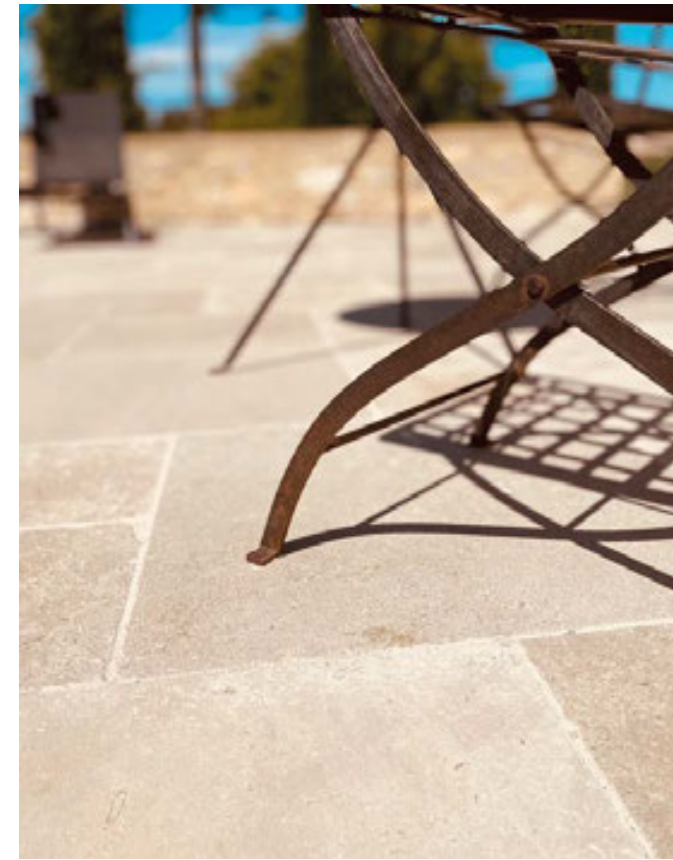
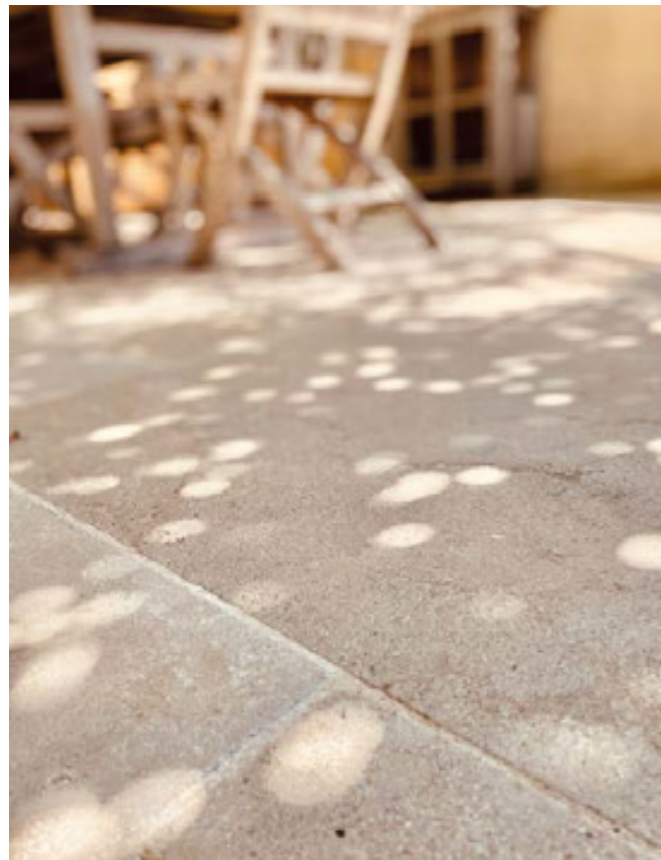
ÄUREAMATERIA



GATZARA ANTIC



ÀUREA MATERIA



GATZARA ANTIC



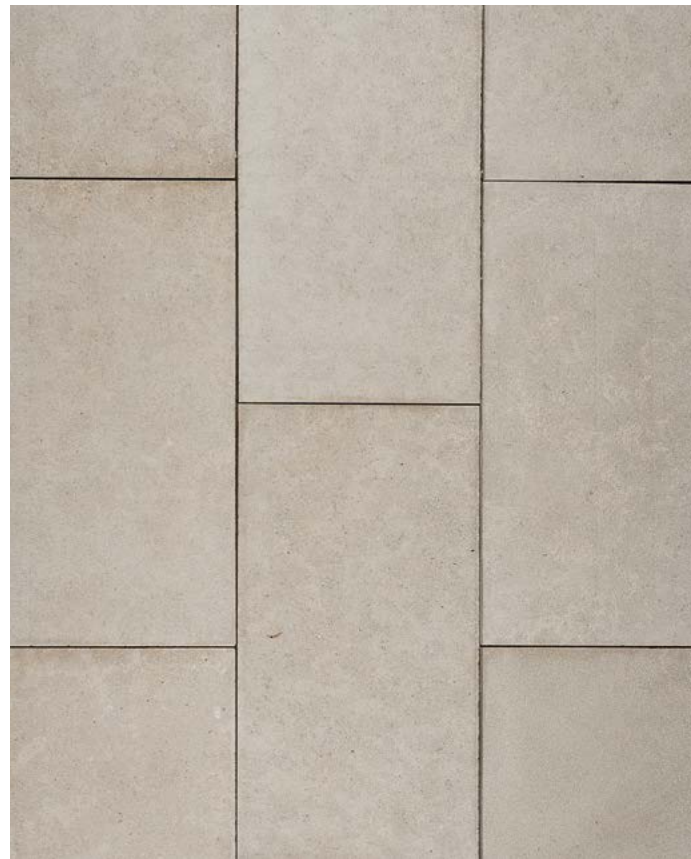
ĂUREA MATERIA



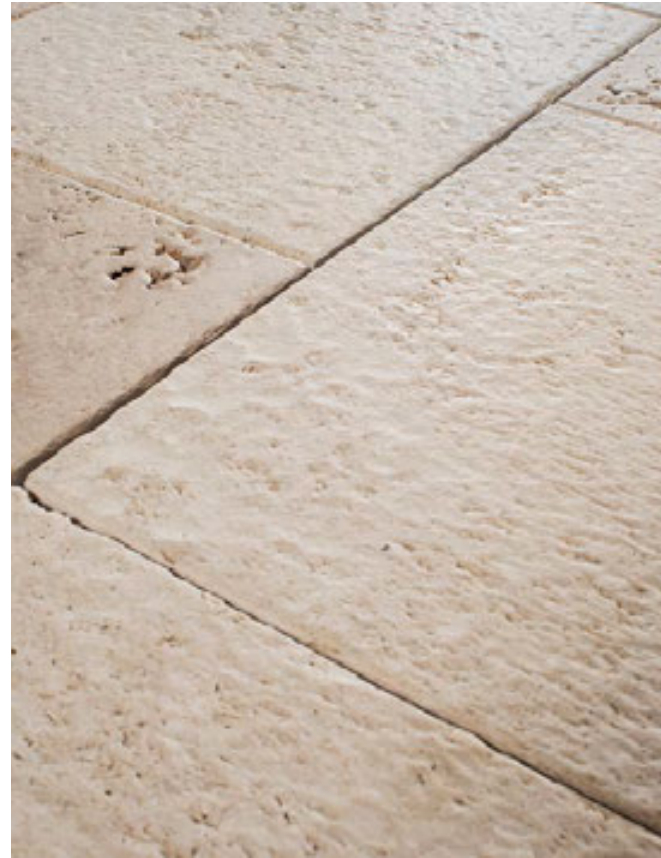
CAYÈNNE



ÀUREA MATERIA



TÍVOLI



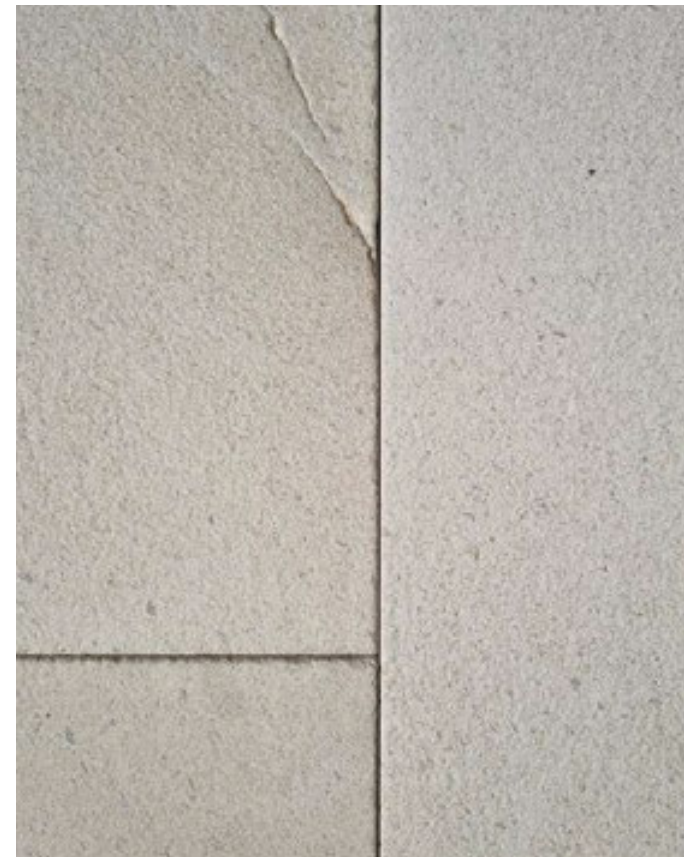
MARINA



ĂUREA MATERIA



MARINA S+B

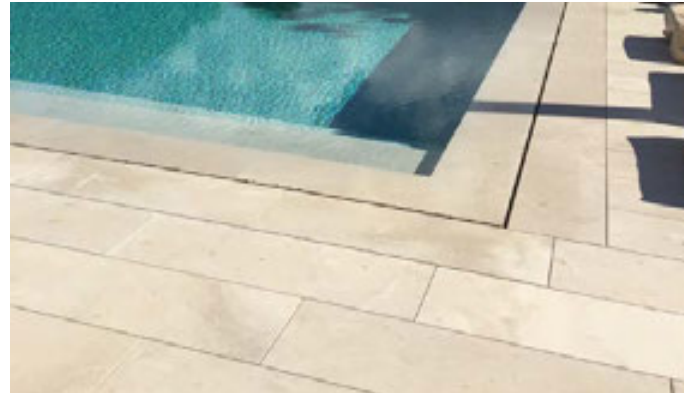


MARINA PÁTINA-TEX

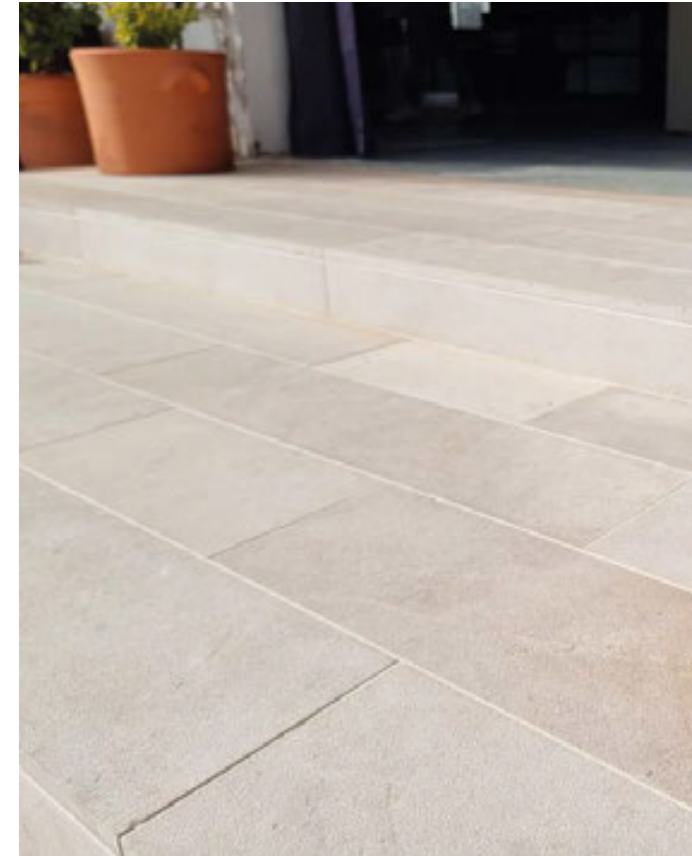
MARINA



ÄUREAMATERIA



MARINA S+B



MARINA S+B

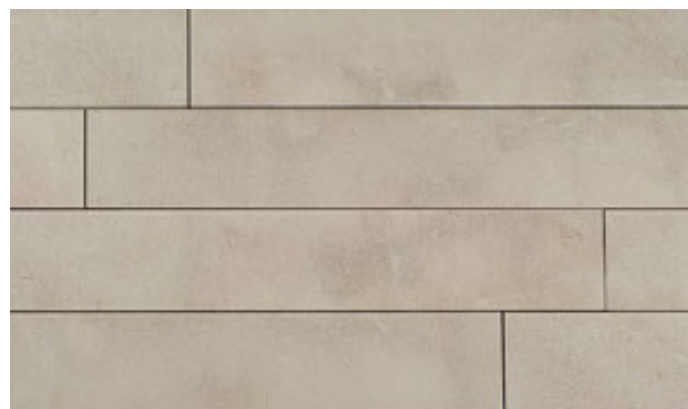
PETRA



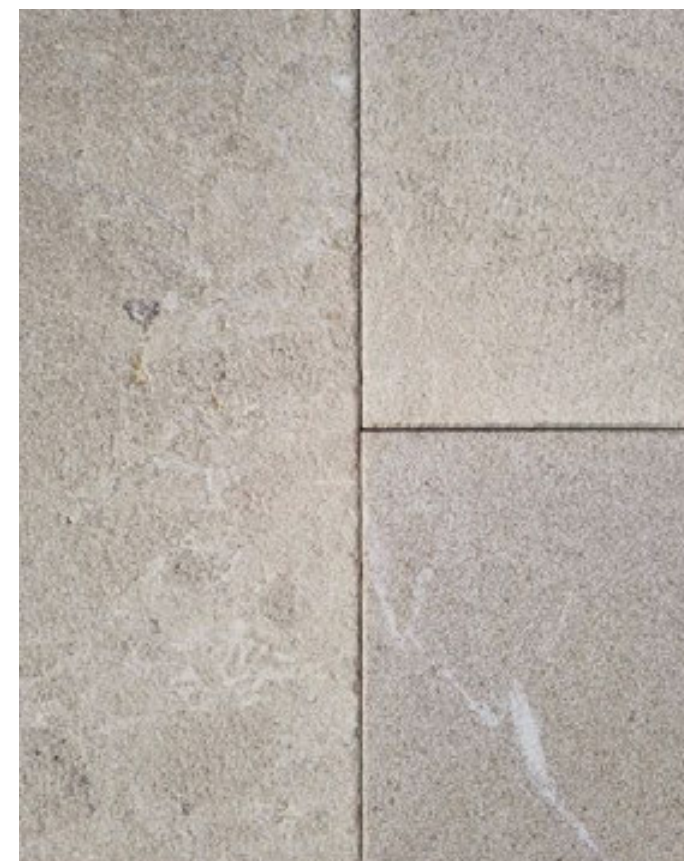
ÁUREA MATERIA



PETRA S+B



PETRA B+B

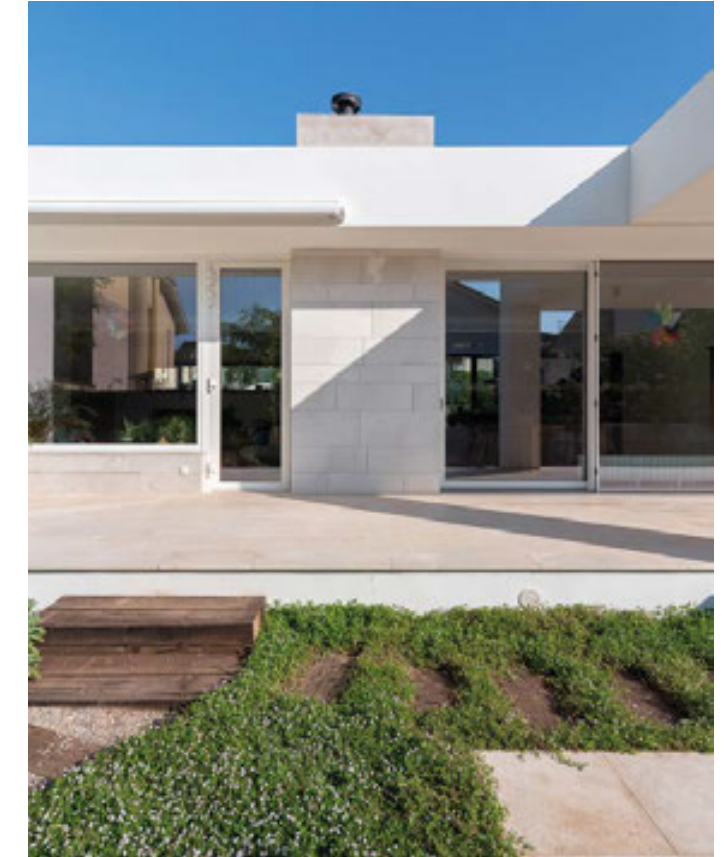
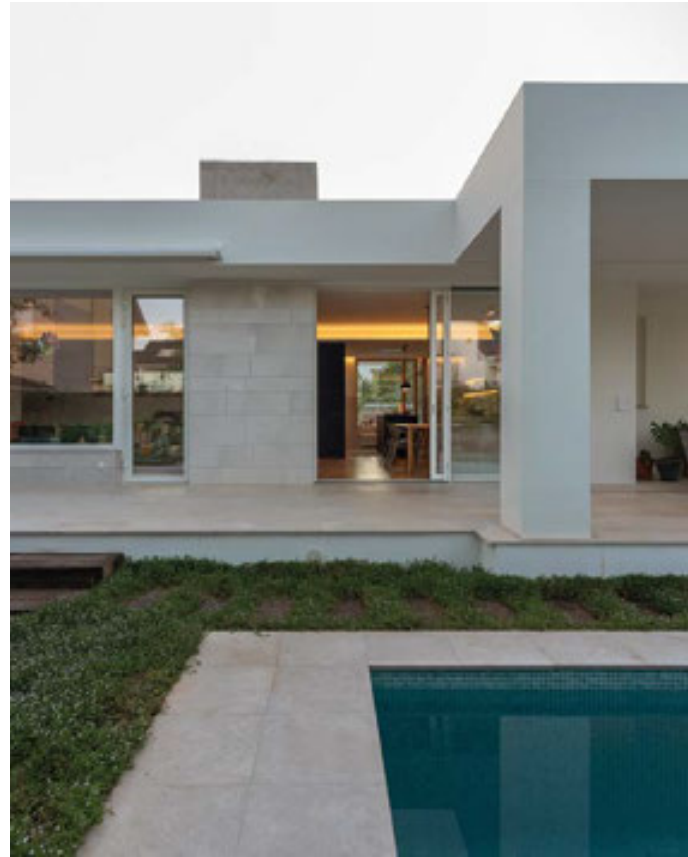


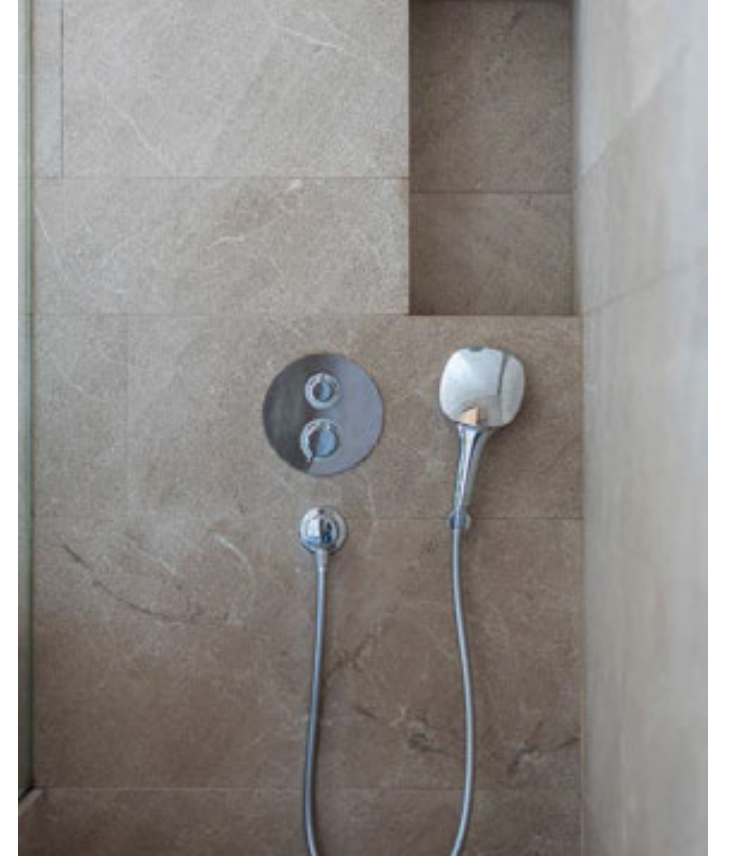
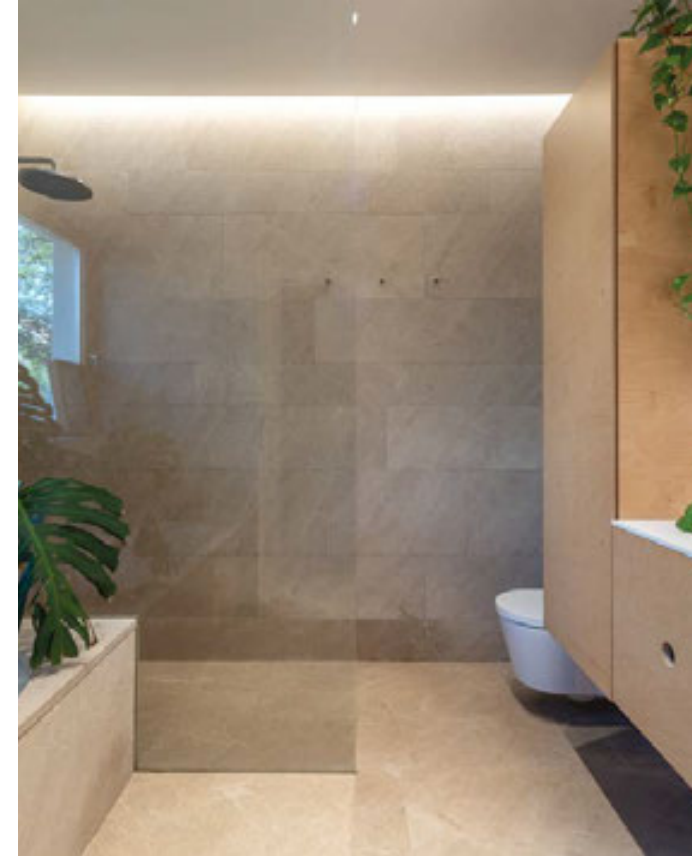
PETRA PÁTINA-TEX

PETRA



ĂUREA MATERIA

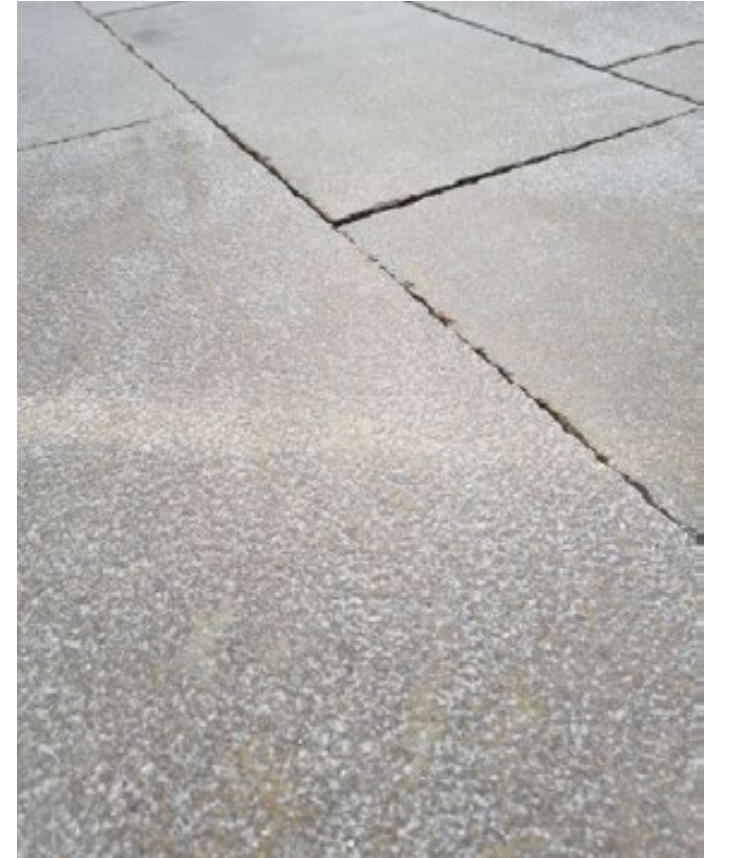




TOSSAL



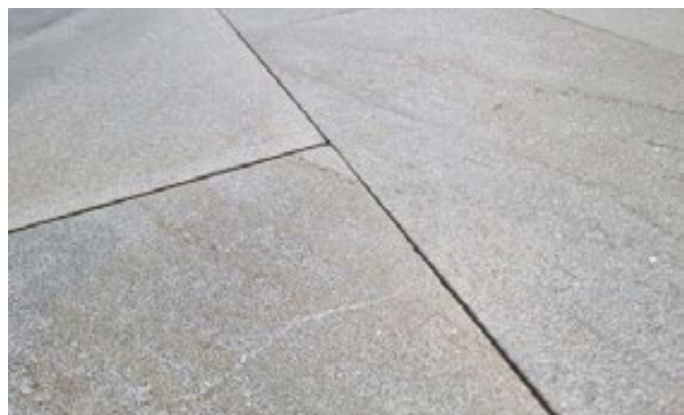
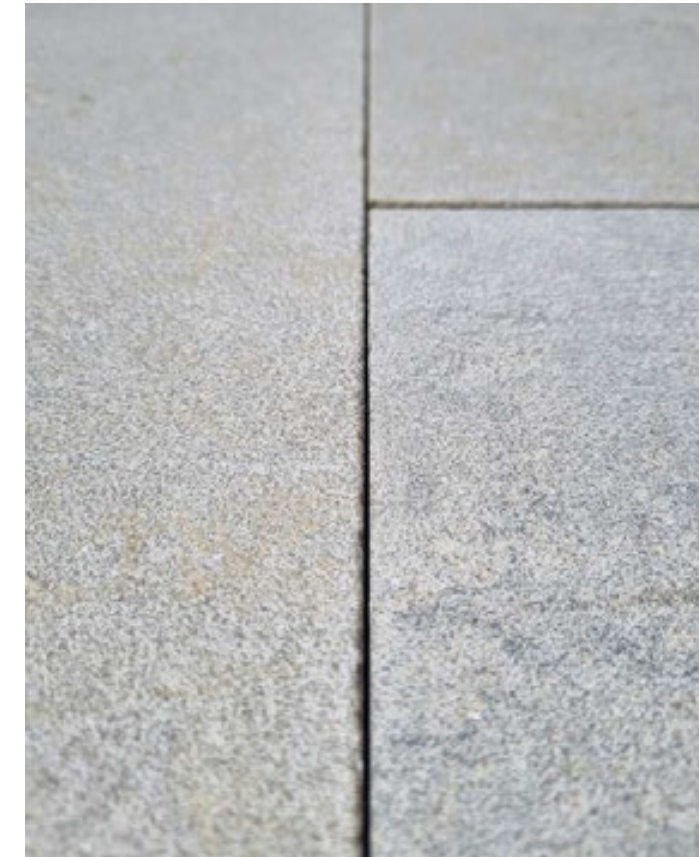
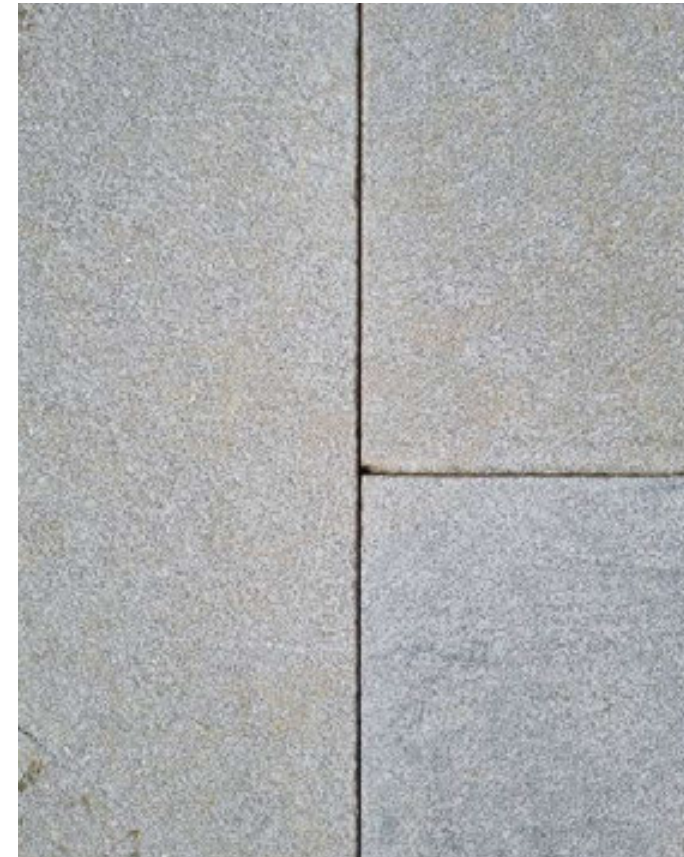
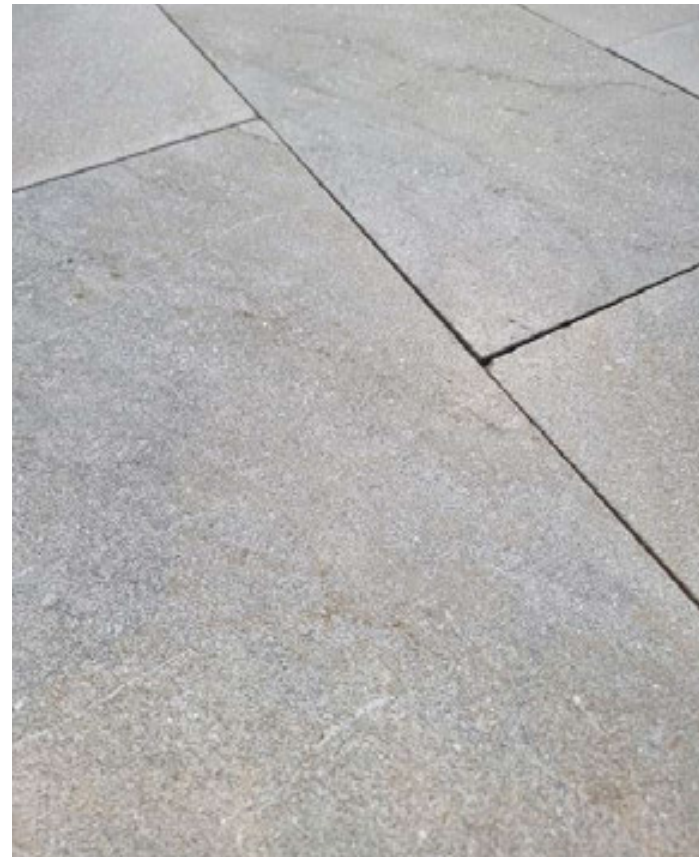
ÄUREAMATERIA



TOSSAL



ÁUREA MATERIA



FÓSIL

FÓSIL ESCUADRA



ÁUREA MATERIA

FÓSIL

FÓSIL XL

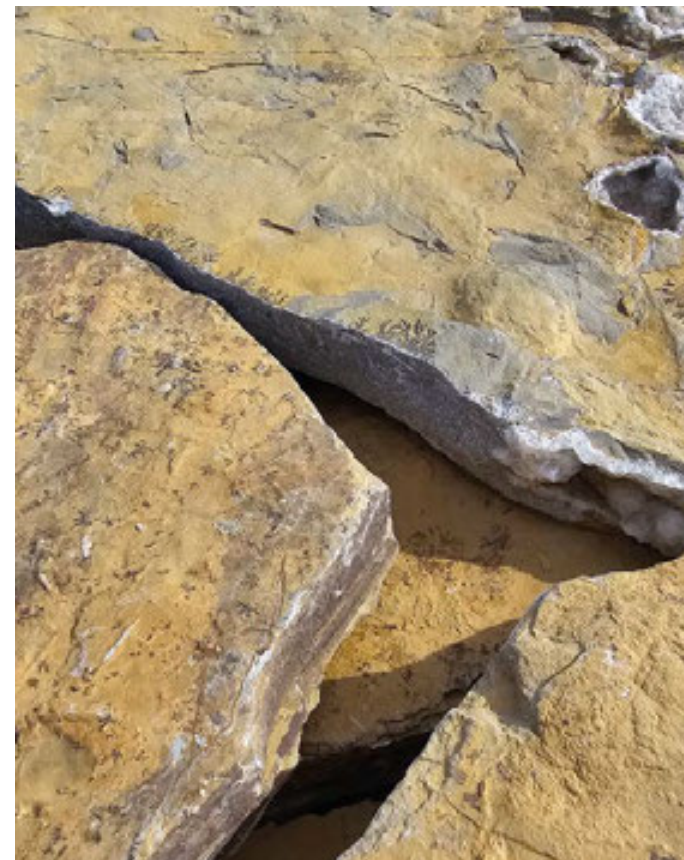


ÄUREA MATERIA



FÓSIL

FÓSIL XL



ĂUREAMATERIA

FÓSIL

FÓSIL XL



FÓSIL

FÓSIL XL



FÓSIL

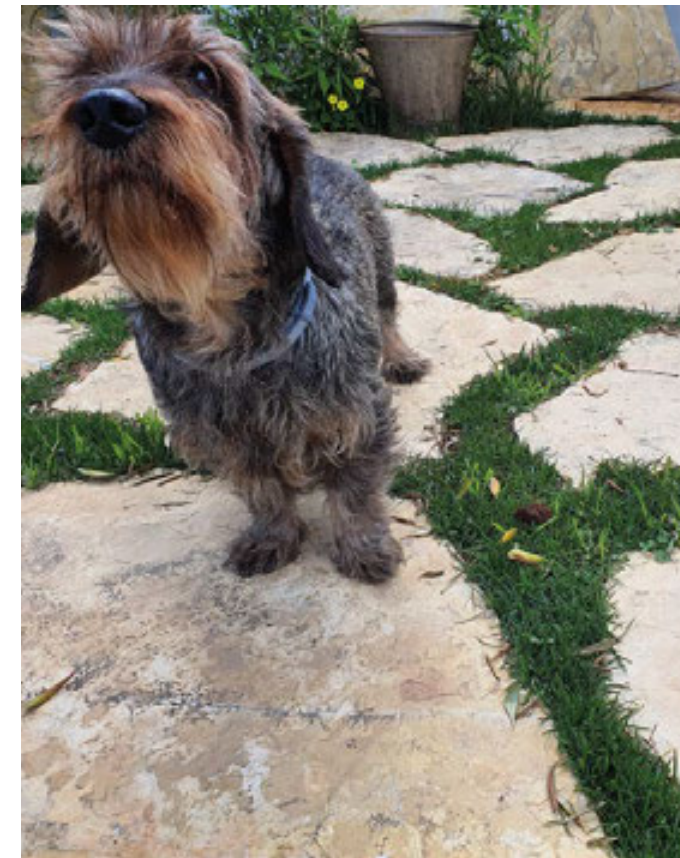
FÓSIL XL



AUREAMATERIA

FÓSIL

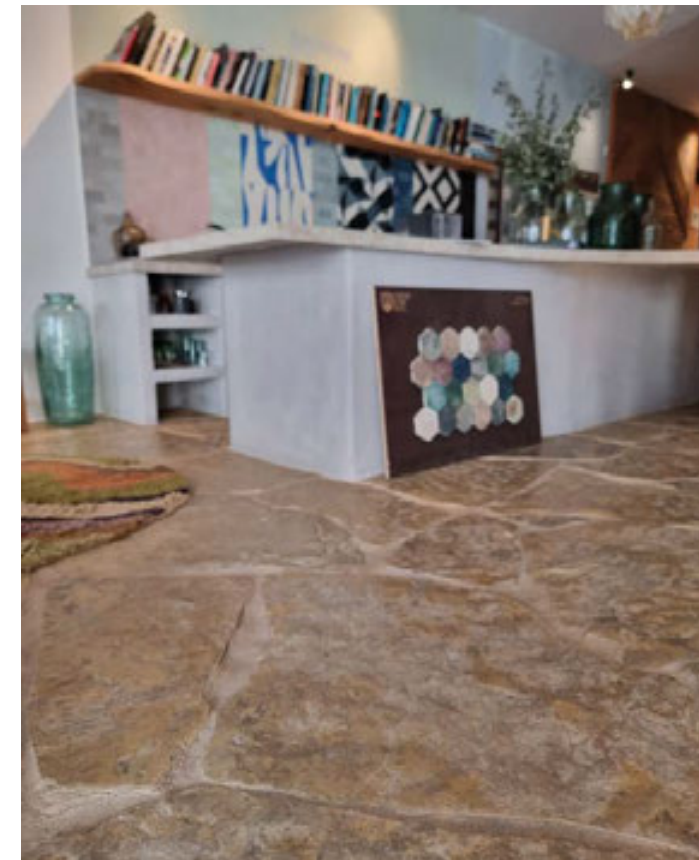
FÓSIL XL



AUREAMATERIA

FÓSIL

FÓSIL XL PATINADA



AUREAMATERIA

FÓSIL

FÓSIL XL PATINADA



ÁUREA MATERIA



FÓSIL

FÓSIL XXL



AUREAMATERIA



FÓSIL

FÓSIL XXL



ÀUREA MATERIA

FÓSIL

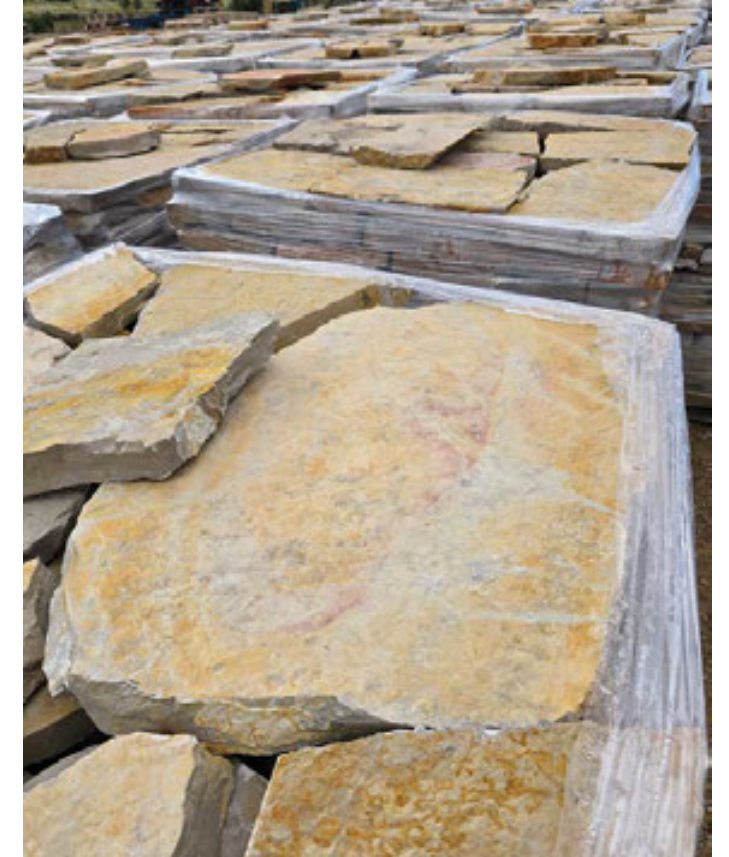
FÓSIL XXL



CLARA



ĂUREA MATERIA





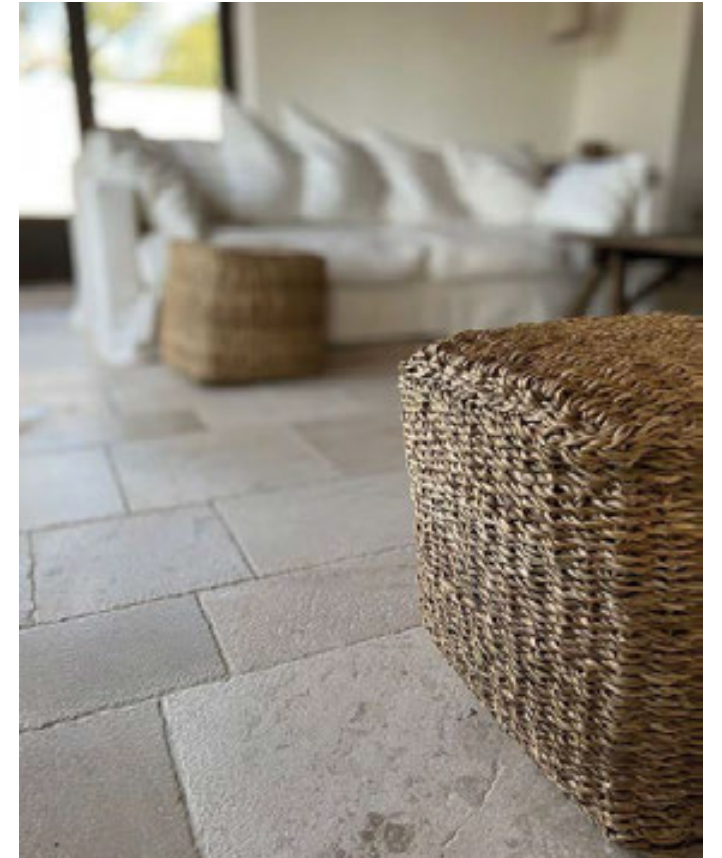
ÁUREA MATERIA



www.aureamateria.com



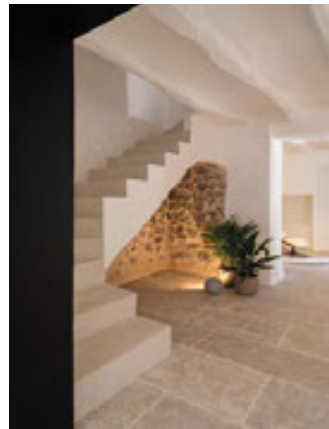
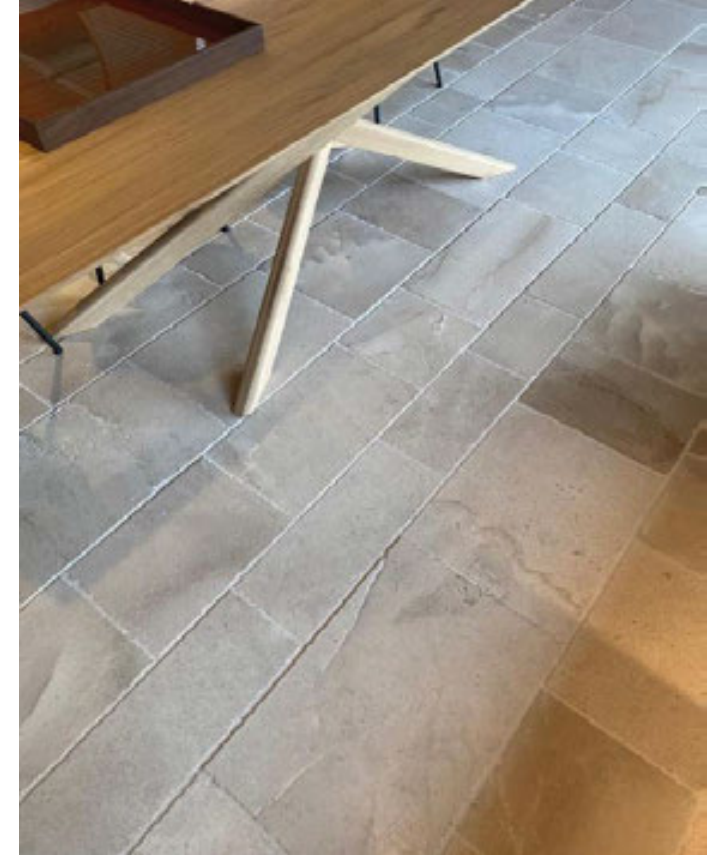
INSPIRACIÓN



INSPIRACIÓN



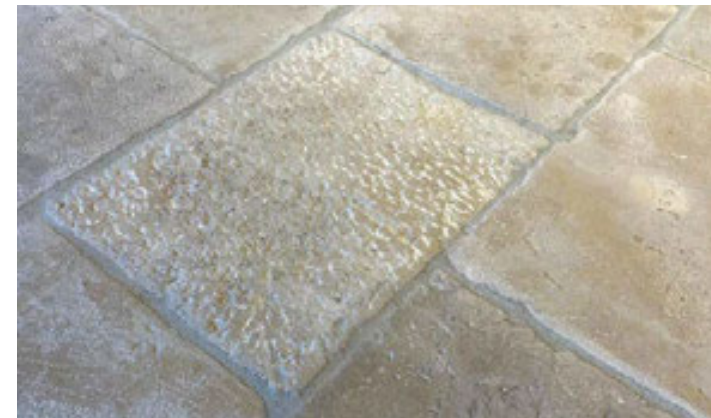
ÁUREA MATERIA

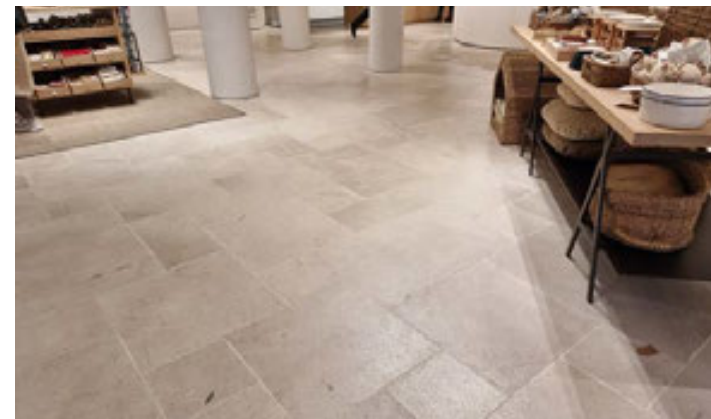
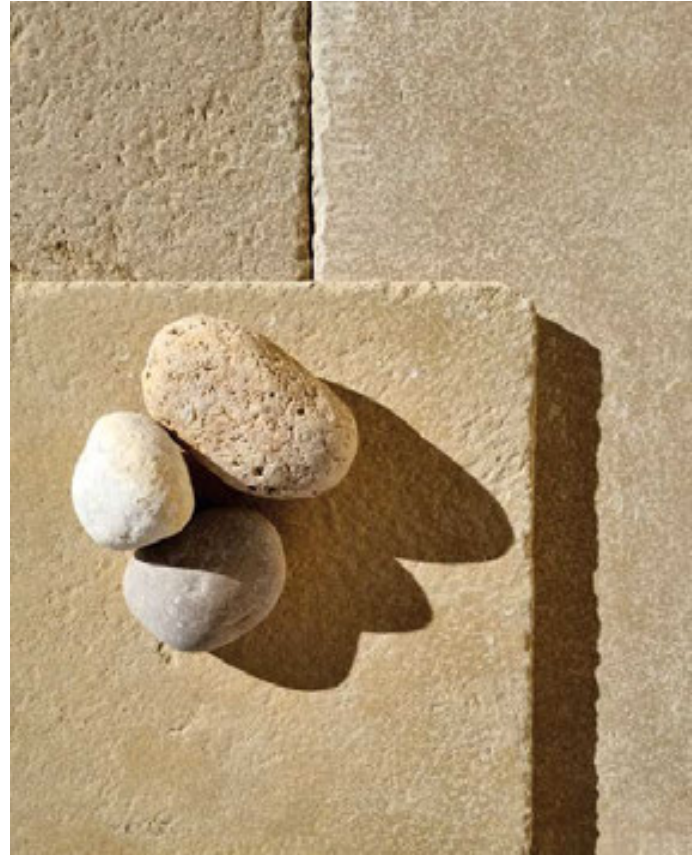


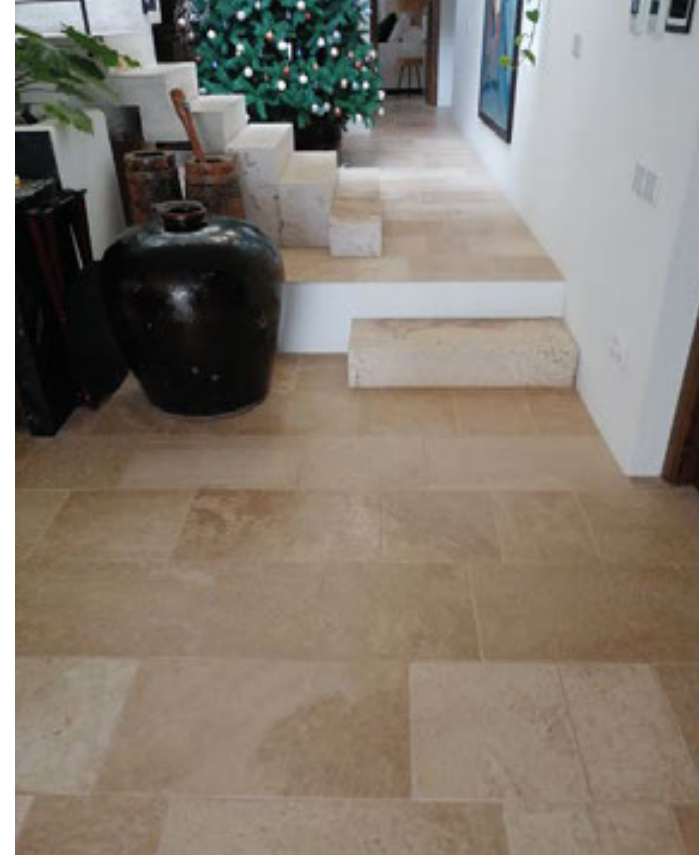
INSPIRACIÓN



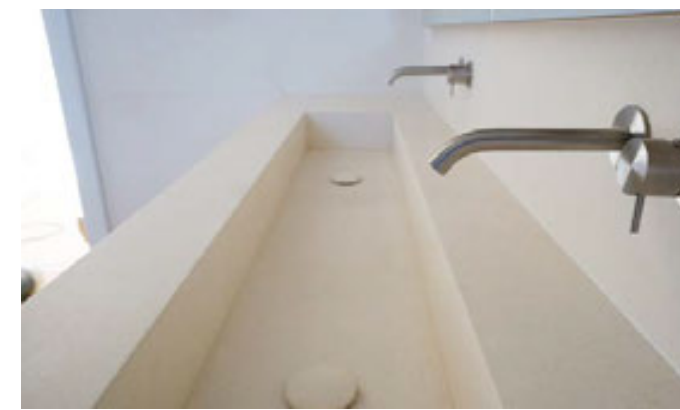
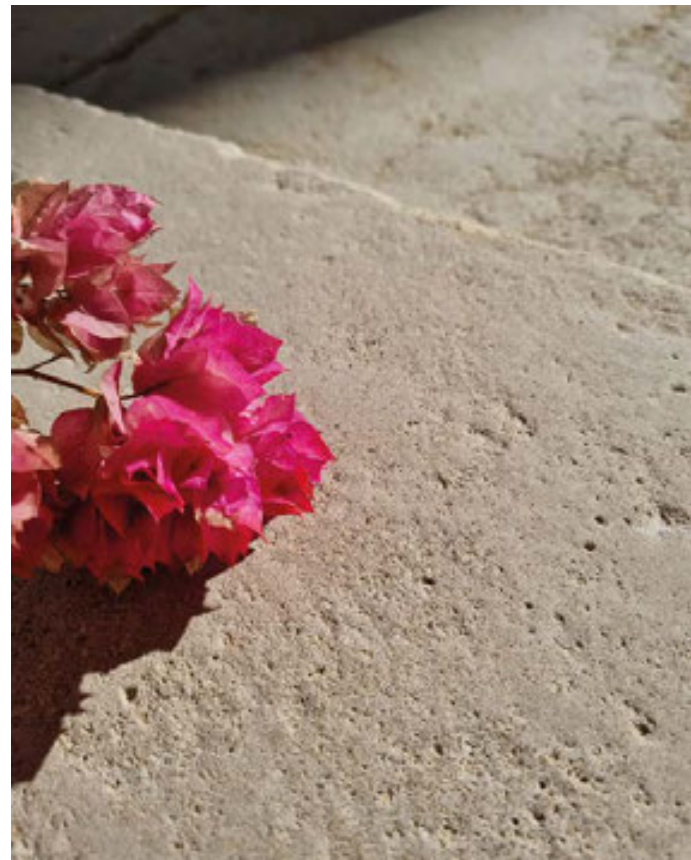
ÄUREAMATERIA







INSPIRACIÓN

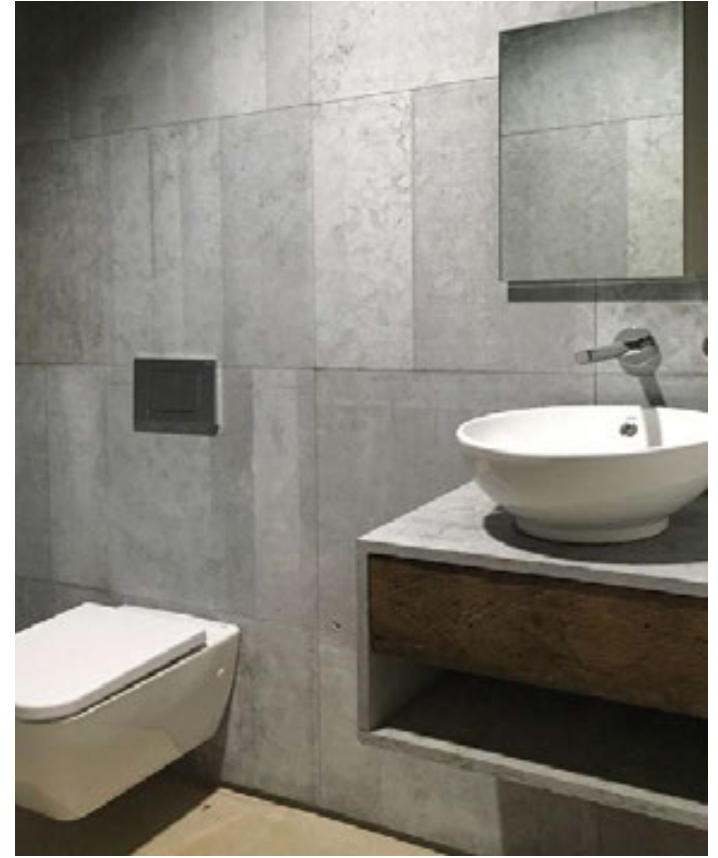
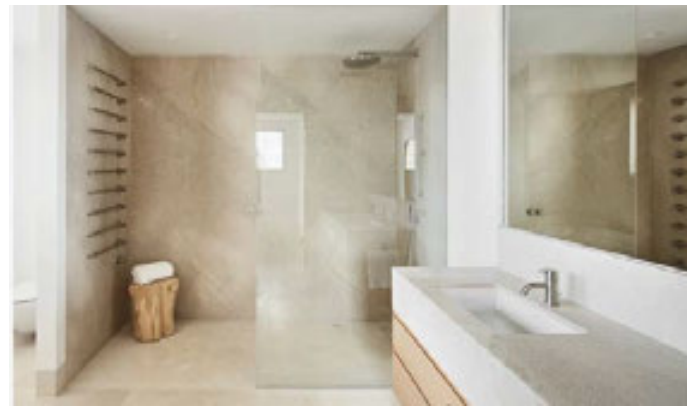


ÄUREAMATERIA

INSPIRACIÓN



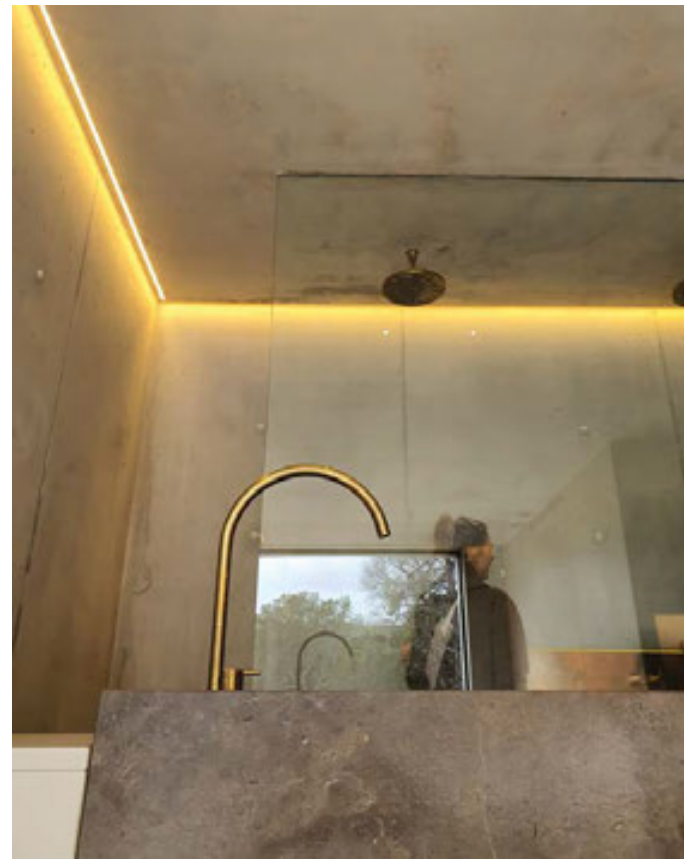
ÀUREA MATERIA



INSPIRACIÓN



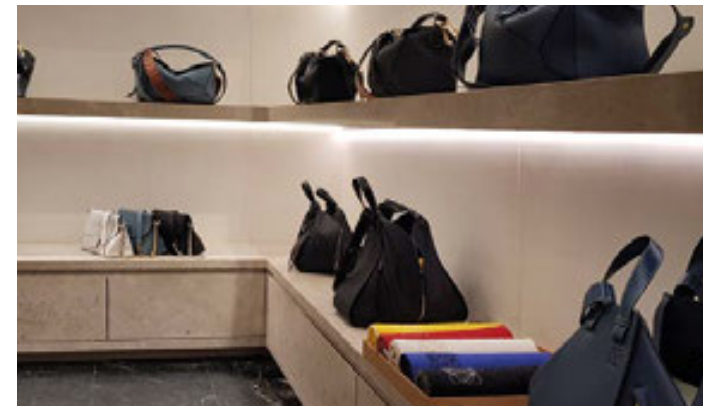
ÁUREA MATERIA



INSPIRACIÓN



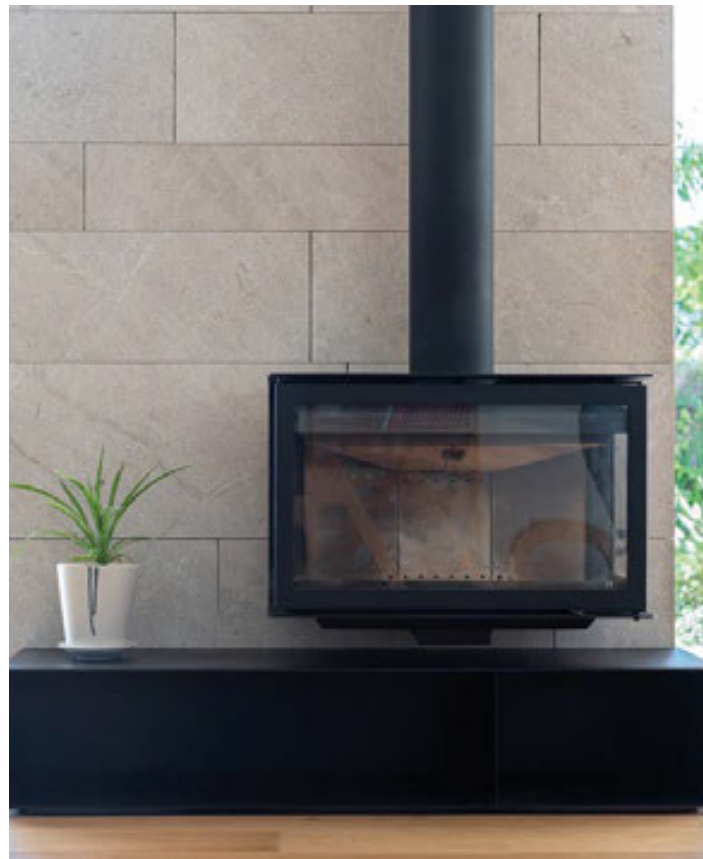
ÀUREA MATERIA



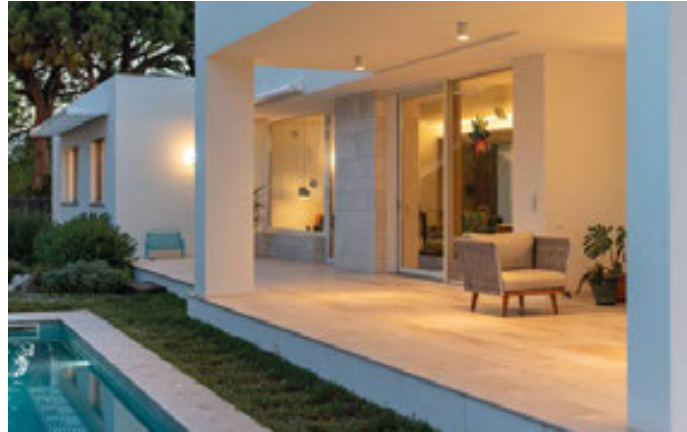
INSPIRACIÓN



ÀUREA MATERIA







INSPIRACIÓN



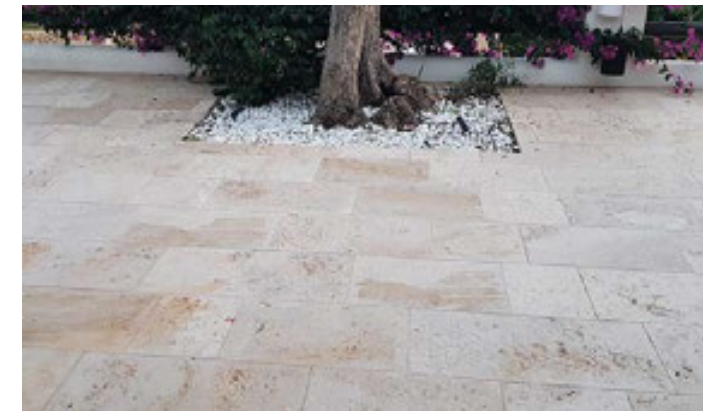
ÀUREA MATERIA



INSPIRACIÓN



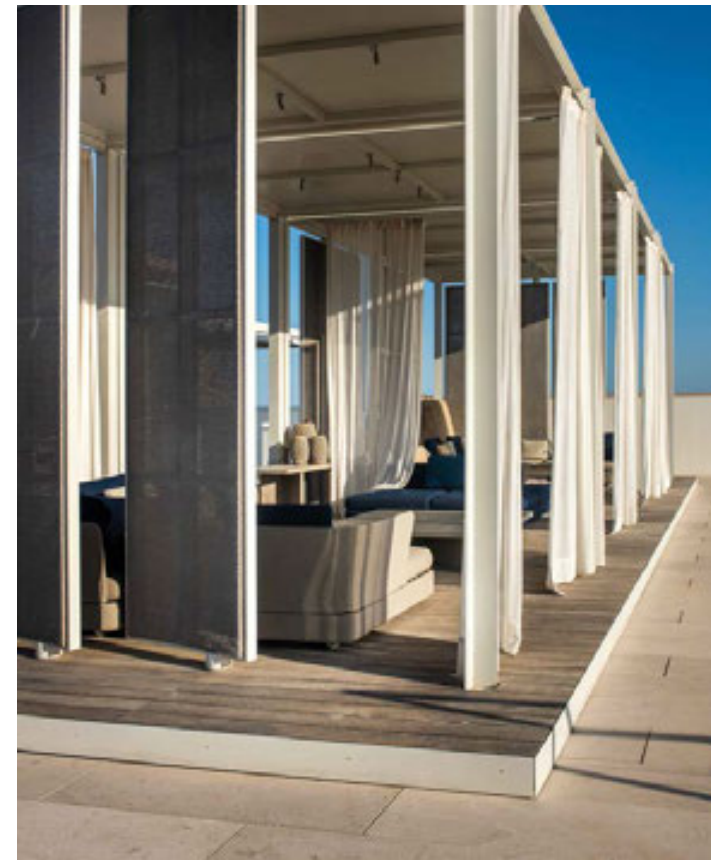
À U R E A M A T E R I A

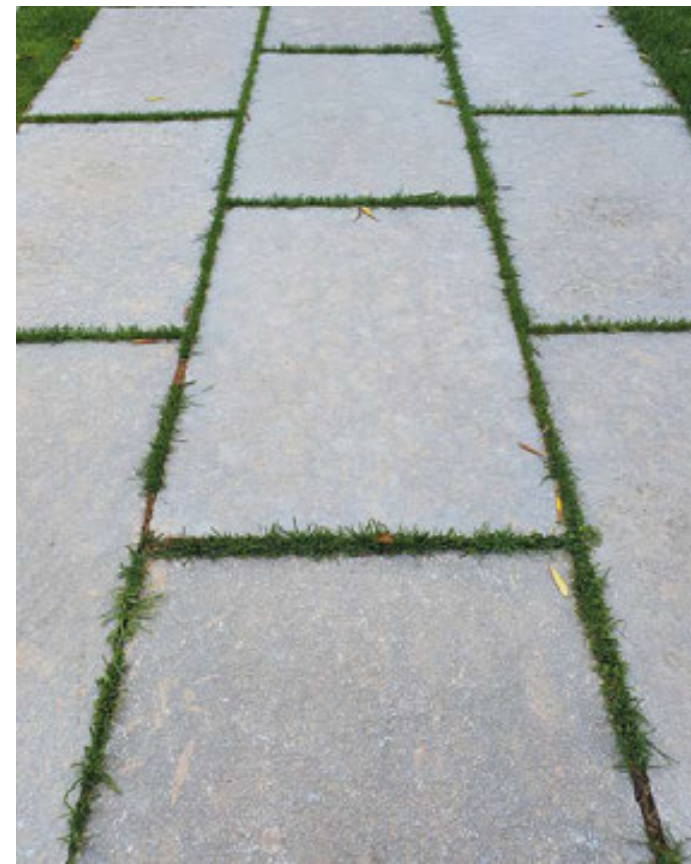
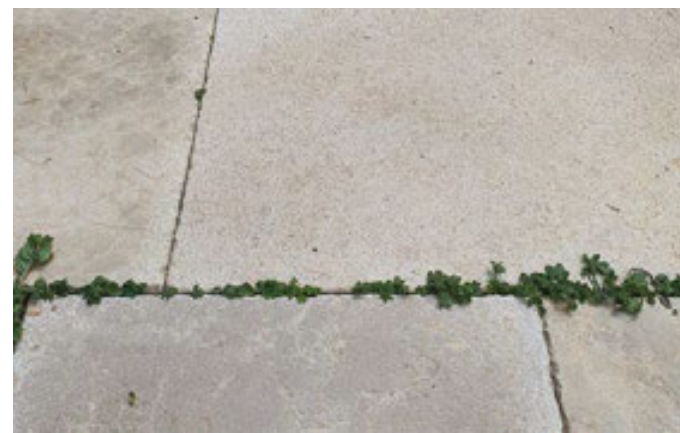


INSPIRACIÓN



ÁUREA MATERIA

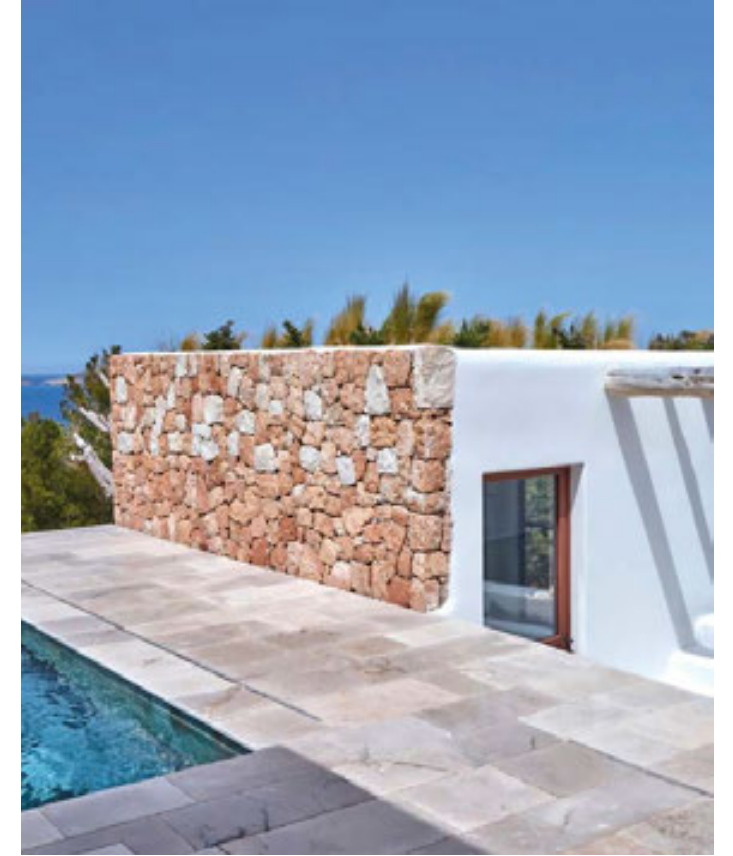




INSPIRACIÓN



ÀUREA MATERIA





INSTALACIÓN DE PIEDRA:

Combinar siempre piezas de diferentes palets.

SOLERÍAS Y PAREDES:

24 horas antes de pegar, sellar solamente la cara vista con HIDROREP de FILA SOLUTIONS.

Utilizar cemento-cola blanco adecuado para piedras calizas.

Doble encolado (solera y dorso de la pieza) sin dejar espacios huecos.

Utilizar junta adecuada y limpiar bien la superficie mientras aún esté húmeda.

Dejar secar y aplicar una mano final de FILA FOB XTREM en zonas de posibles manchas.

PLAYAS DE PISCINA:

Idem que lo anterior pero sustituyendo el hidrorep por SALVATERRAZZA ECO de FILA.

VASOS DE PISCINA:

Consultar al 667 580 169

No se admiten reclamaciones sobre material ya instalado.

MANTENIMIENTO DE PIEDRA:

En zonas de posibles manchas de aceites, recomendamos el uso periódico de FILA MATT diluido en el agua de fregar el suelo.

www.aureamateria.com



ĂUREAMATERIA



Áurea Materia es la marca de piedra natural para la arquitectura de Víctor Dols, S.L., con sede y almacén en Castellón.

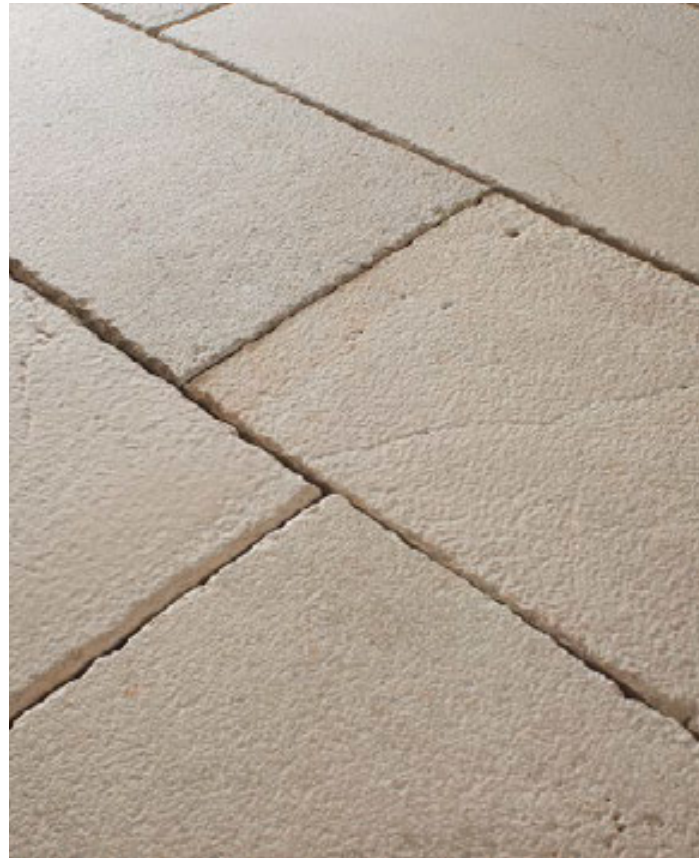
Hemos desarrollado una colección de baldosas de piedras calizas seleccionadas por su comportamiento y belleza, dándoles el acabado superficial adecuado para potenciar su elegante carácter natural.

La mayoría de calizas que abundan en la corteza de la tierra actualmente se formaron durante el mesozoico a partir del sedimento marino de restos de corales y conchas.

Actualmente, estas piedras bien seleccionadas, trabajadas e instaladas, aportan a la arquitectura una autenticidad y belleza que va ganando en carácter con el paso del tiempo y están concebidas para durar muchas décadas como la hermosa piel de tus proyectos.

Víctor Dols S.L.
B12552774
Polígono 12 Font de Roc
12180 Cabanes (Castellón)
☎ 📞 +34 667 580 169
Info@aureamateria.com
www.aureamateria.com

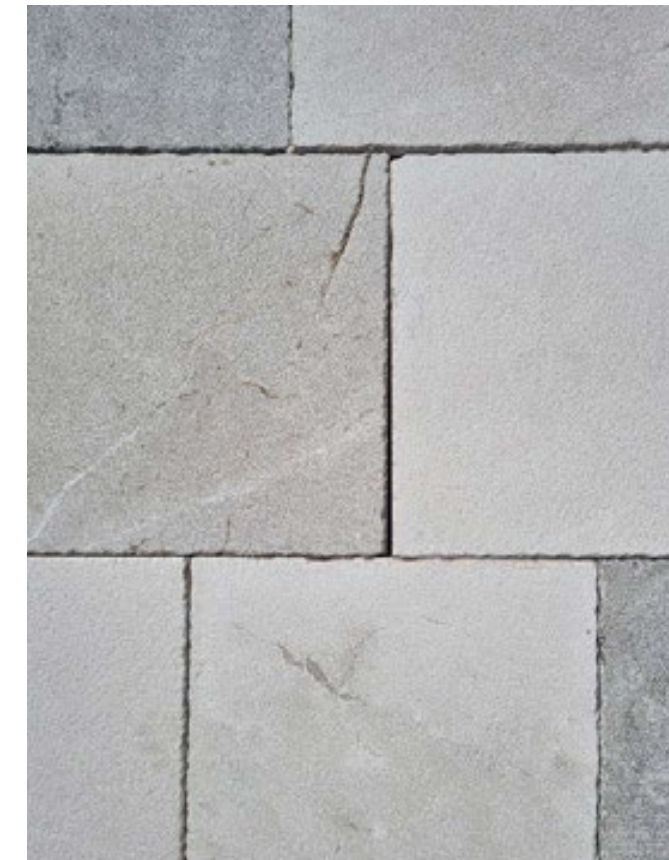
PROVENÇAL MIX ANTIC



PROVENÇAL ASH ANTIC



ÀUREA MATERIA



PROVENÇAL ARENA ANTIC



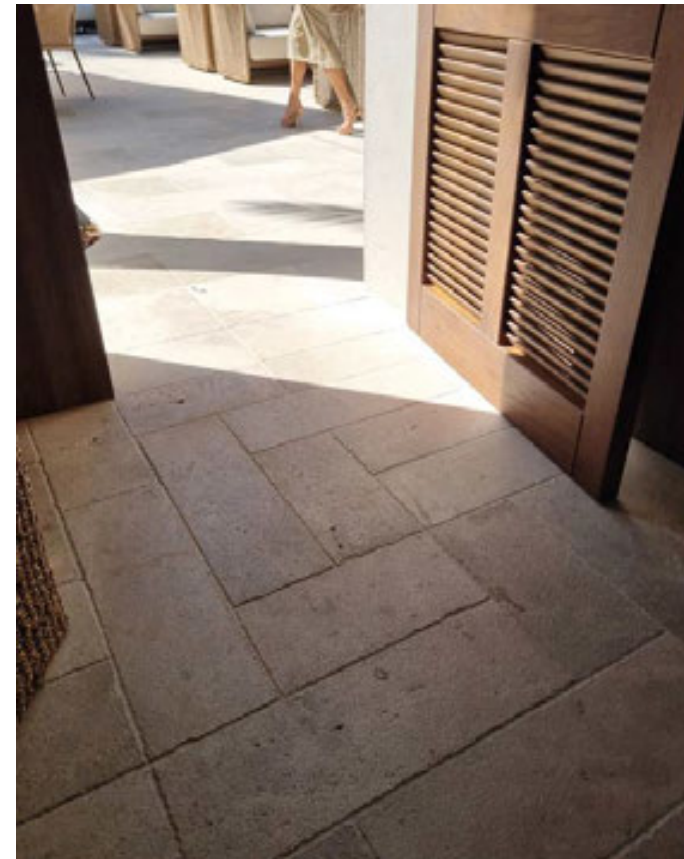
ÀUREA MATERIA



PROVENÇAL ÁMBAR ANTIC



ÀUREA MATERIA



LUARCA NATURE



ÄUREA MATERIA



VORAMAR ANTIQUE



ÄUREA MATERIA



CARCASSONA



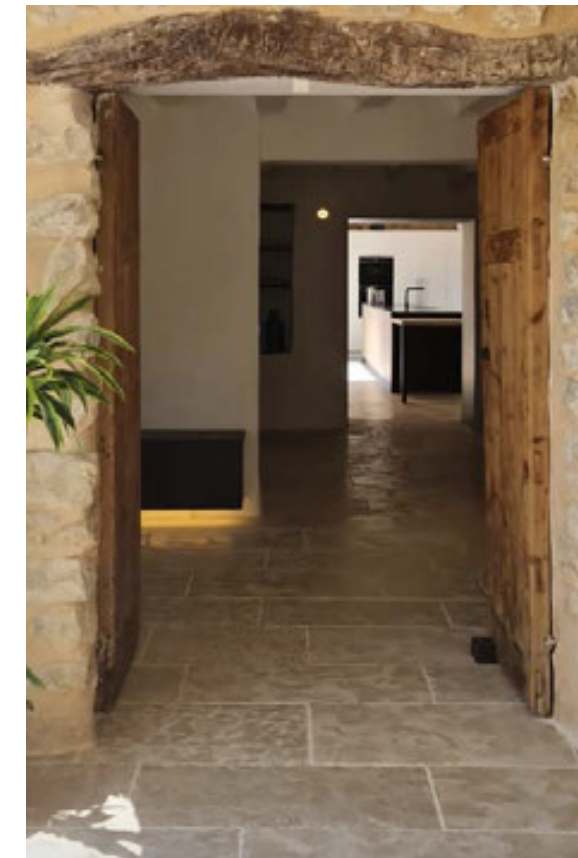
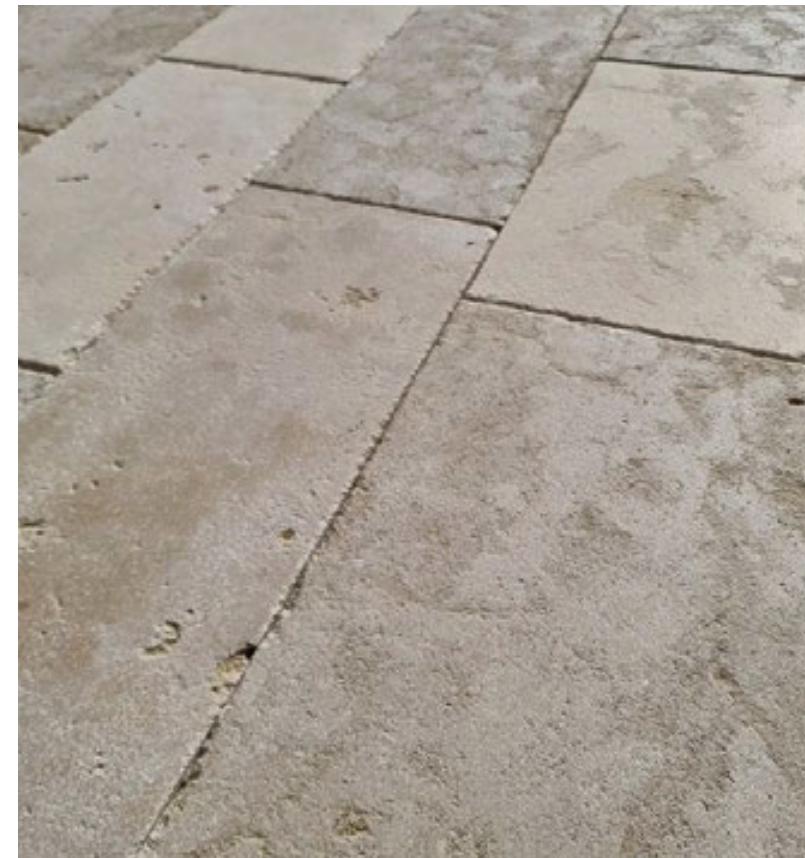
AUREAMATERIA



MIRAVET ANTIQUE



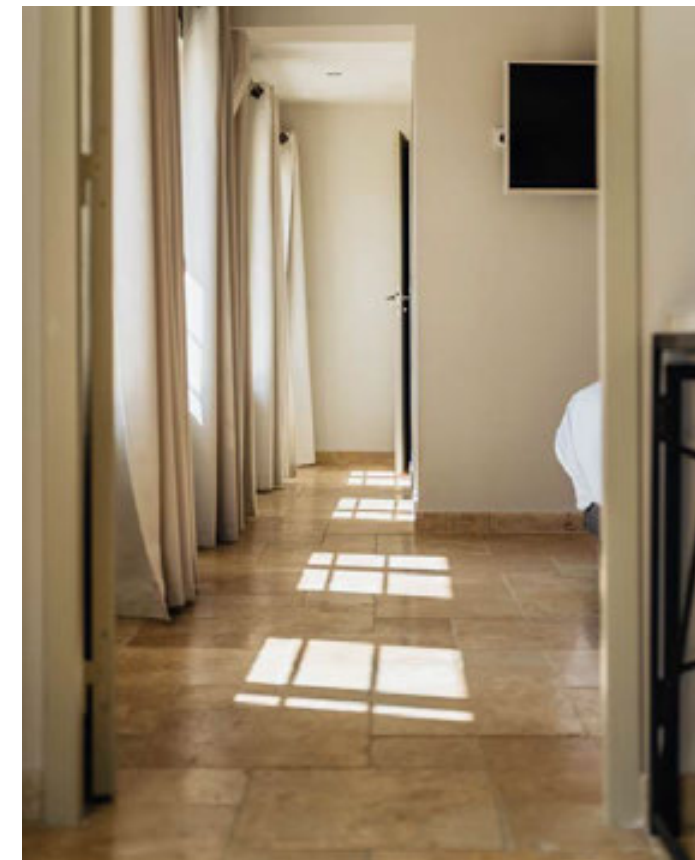
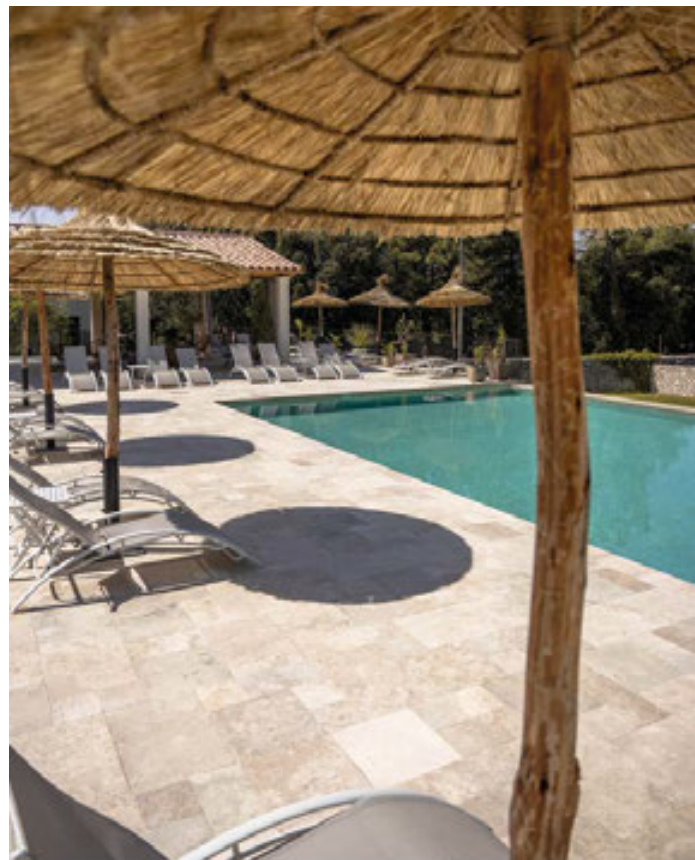
ÄUREAMATERIA



TERRA



ÄUREA MATERIA

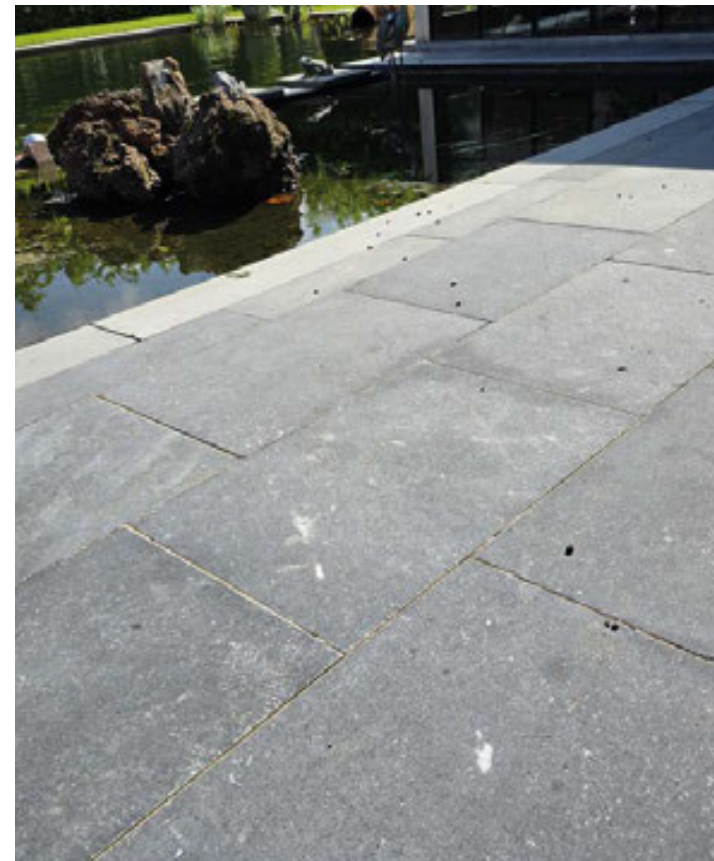




PEDRA BLAVA ANTIC



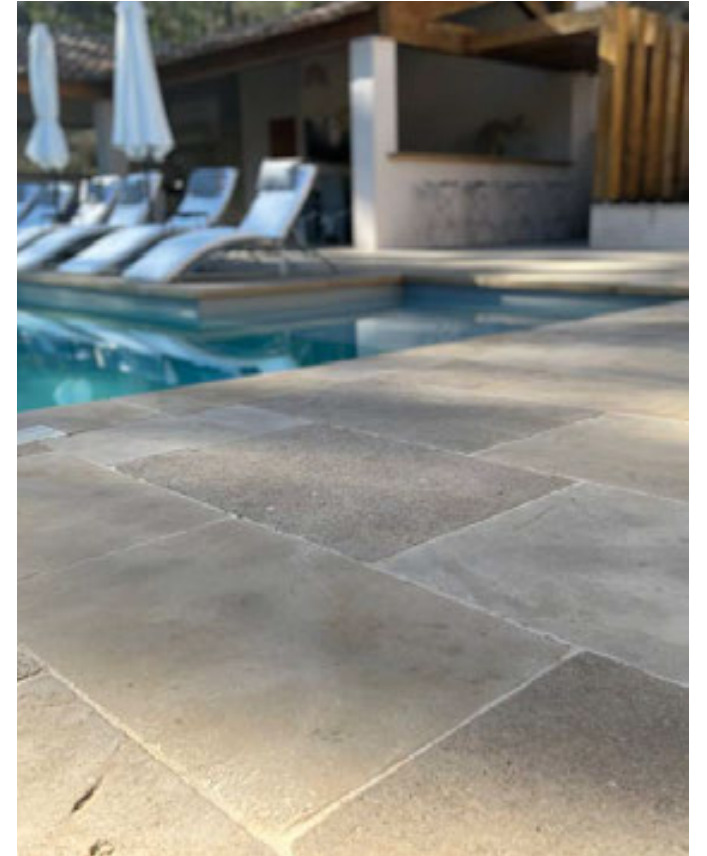
ÄUREA MATERIA



GATZARA ANTIC



ÀUREA MATERIA



GATZARA ANTIC



ĂUREA MATERIA



TÍVOLI



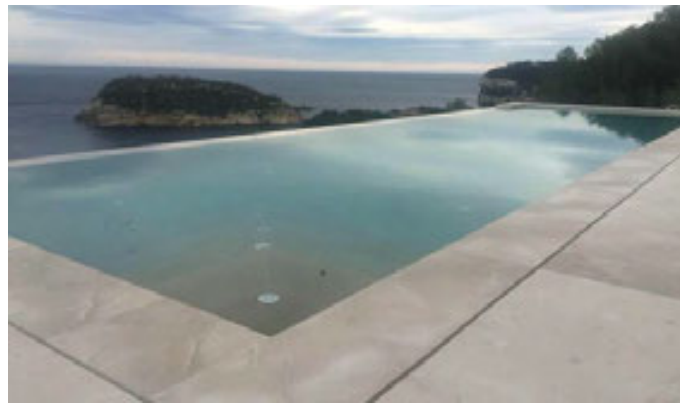
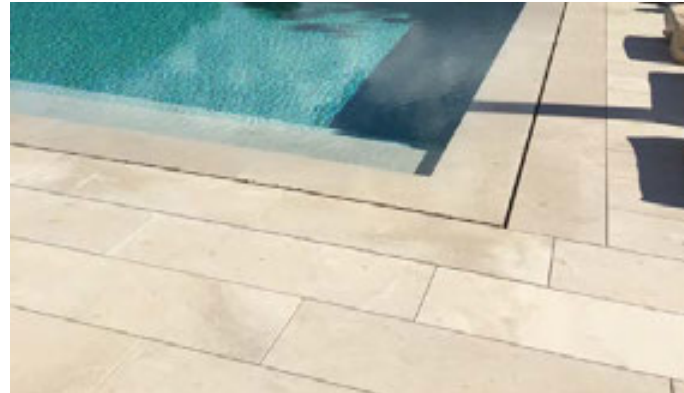
PROVENÇAL ARENA



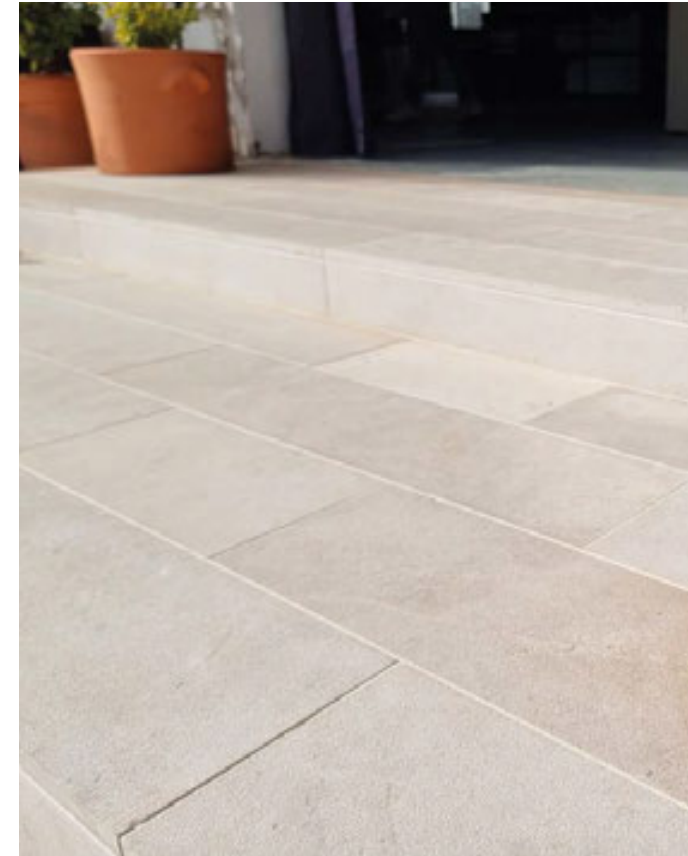
ÄUREA MATERIA



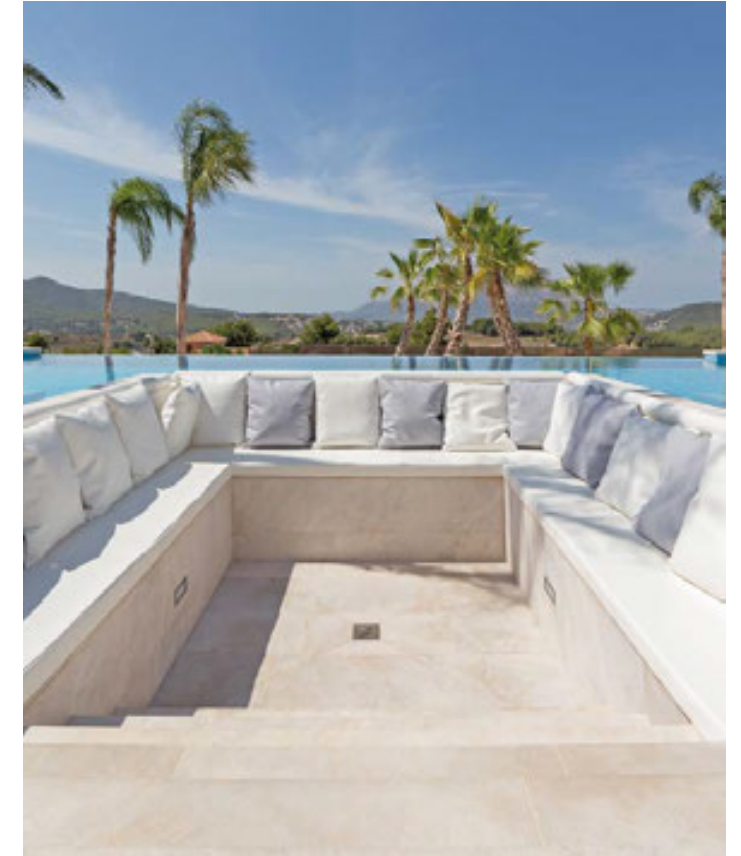
PROVENÇAL ARENA S+B



PROVENÇAL ARENA B+B



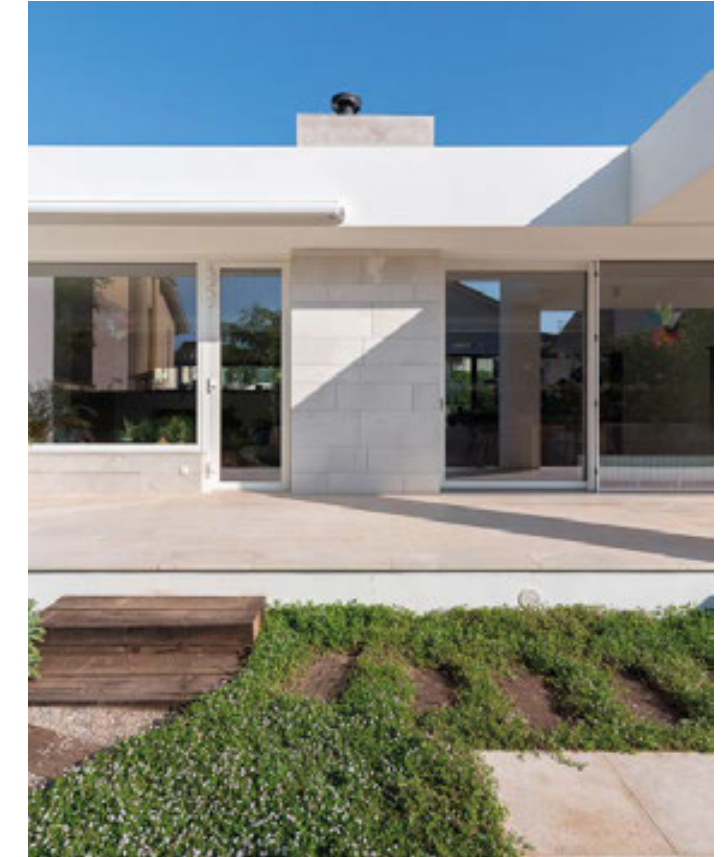
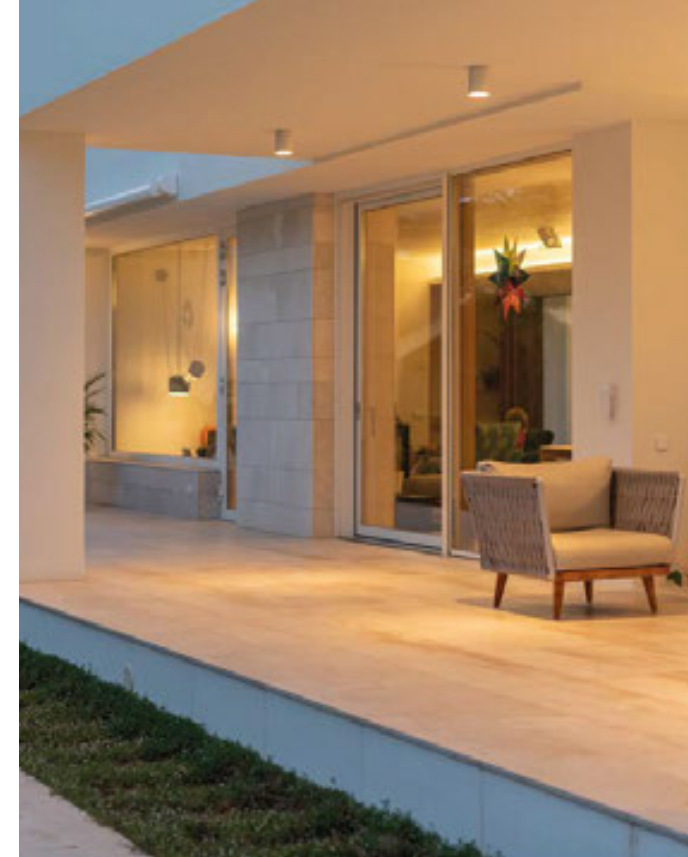
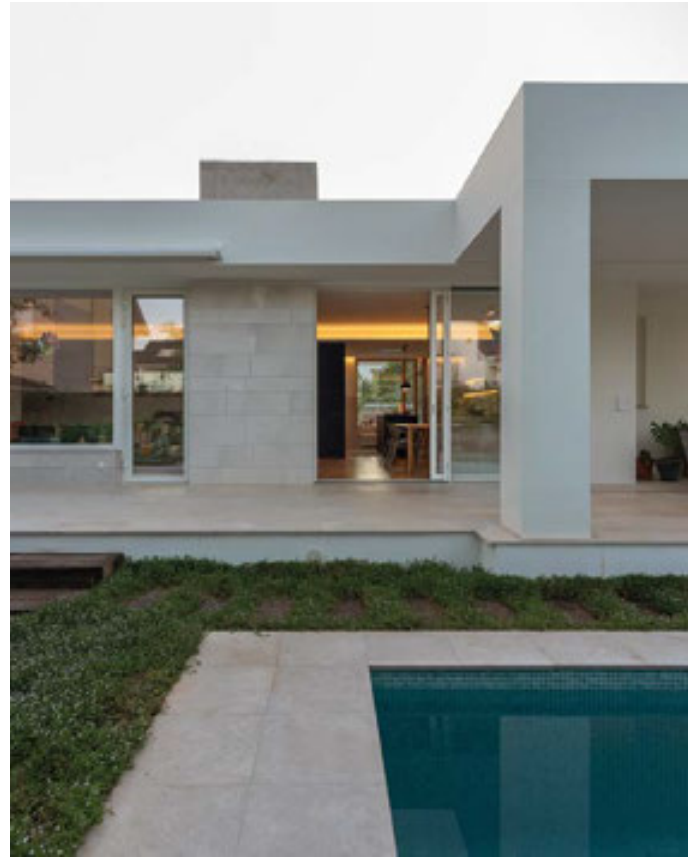
PROVENÇAL ARENA S+B



PROVENÇAL PETRA



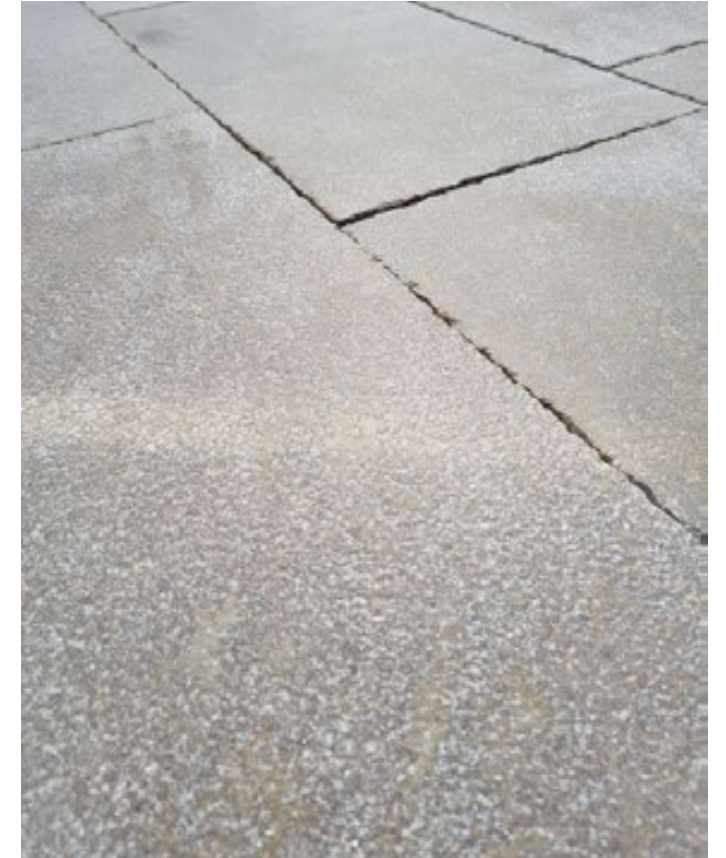
ĂUREA MATERIA



PROVENÇAL TOSSAL



ÀUREA MATERIA



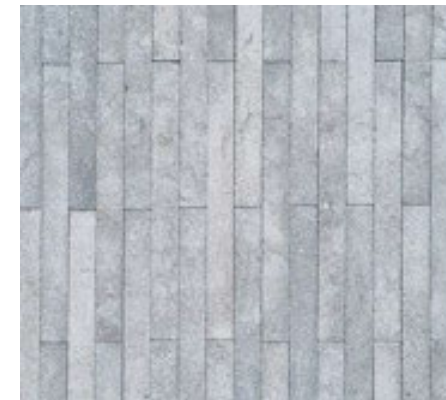
URDAIBAI



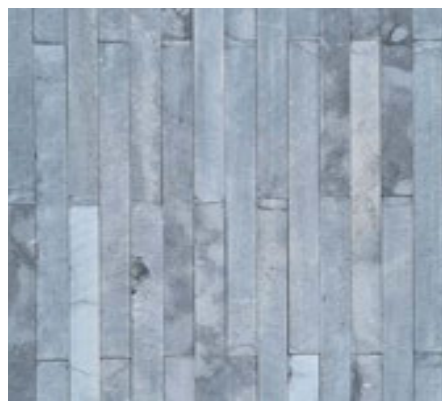
À U R E A M A T E R I A



URDAIBAI GRAFITO ANTIC

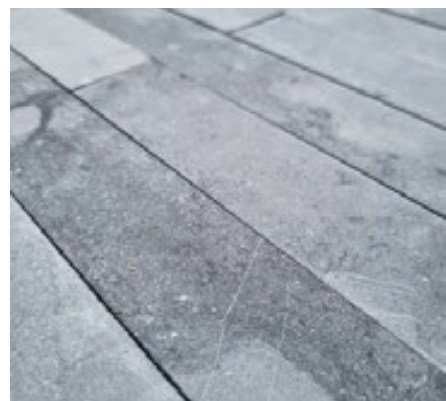


URDAIBAI TOPO ANTIC



URDAIBAI GRAFITO CONTEMPO

Dimensiones: 50x5 cm

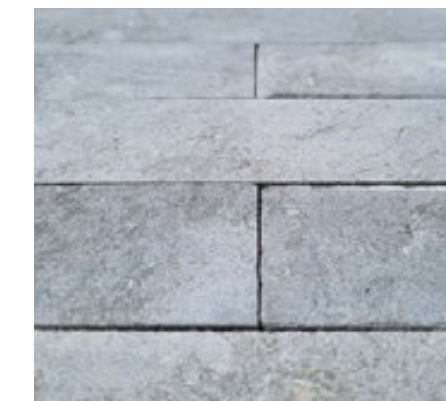
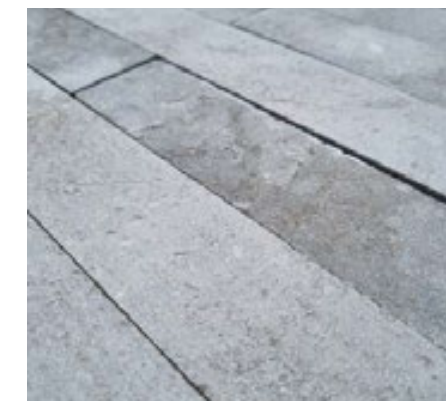


Espesor: 1,5 cm



URDAIBAI TOPO CONTEMPO

Dimensiones: 50x5 cm



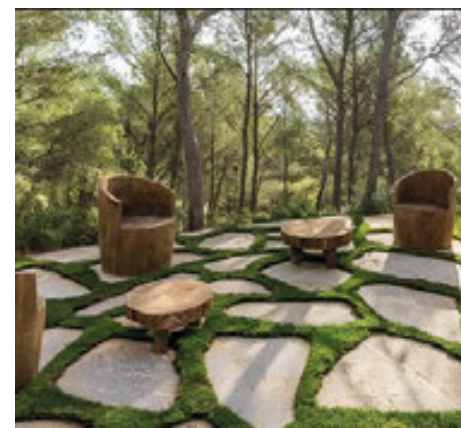
Espesor: 1,5 cm

PIEDRAS CLUNY

PIEDRA CLUNY



ÀUREA MATERIA

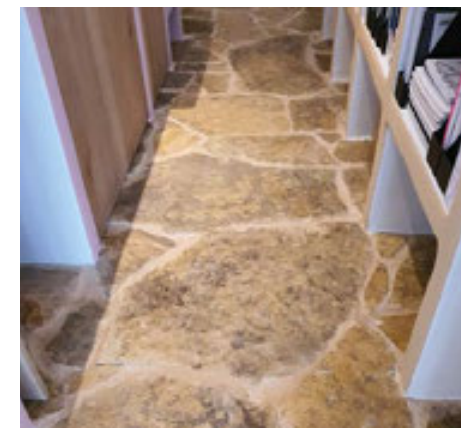
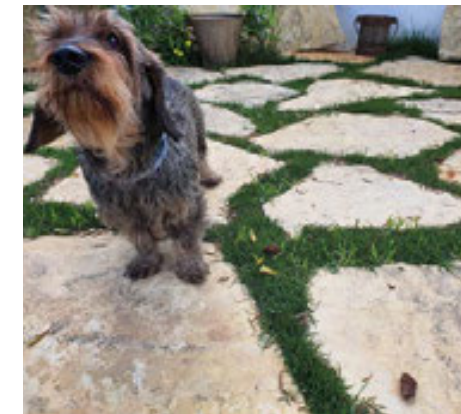


PIEDRAS CLUNY

PIEDRA CLUNY



AUREAMATERIA



PIEDRAS CLUNY

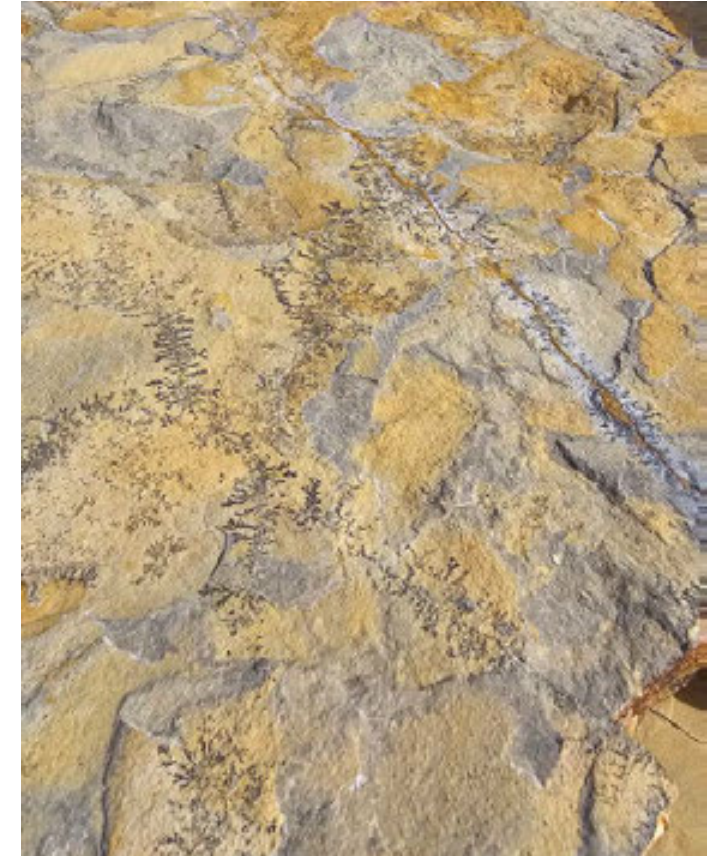
PIEDRA CLUNY CLARA



ÄUREA MATERIA

PIEDRAS CLUNY

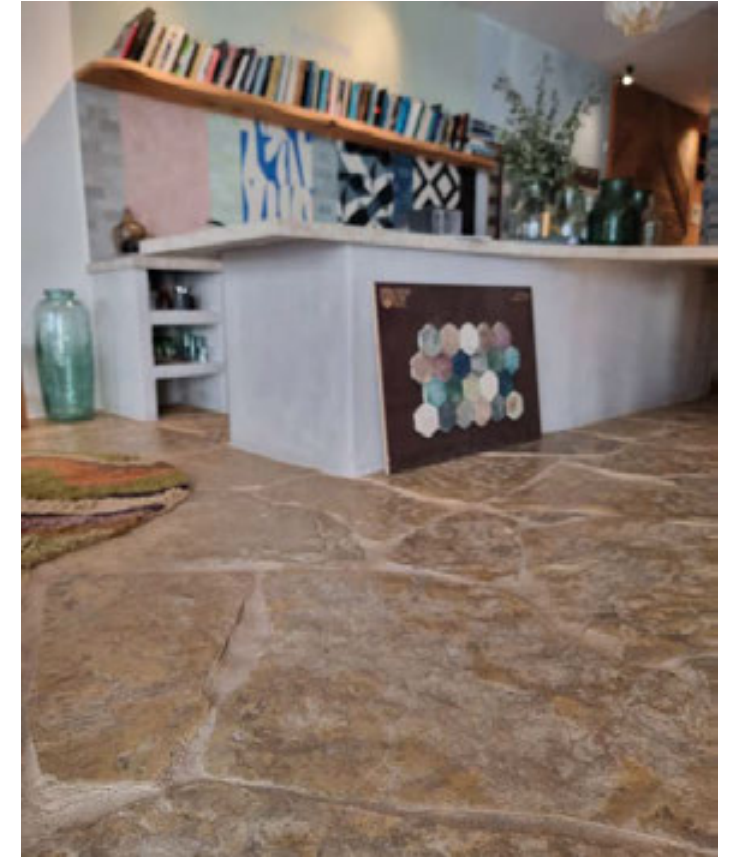
PIEDRA CLUNY FOSIL XL



ÄUREAMATERIA

PIEDRAS CLUNY

PIEDRA CLUNY FOSIL XL PATINADA



AUREAMATERIA

PIEDRAS CLUNY

PIEDRA CLUNY OCRES M

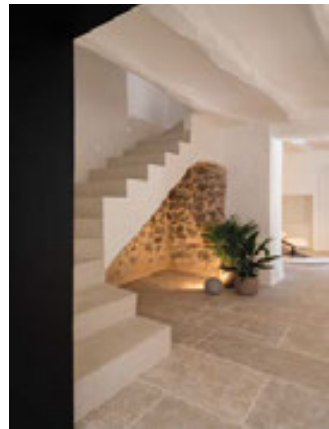


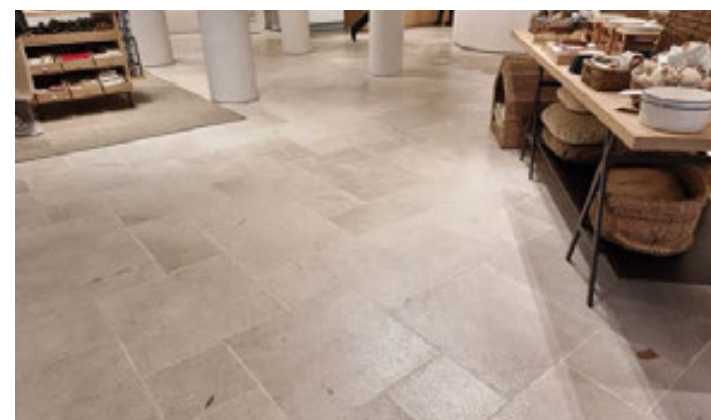
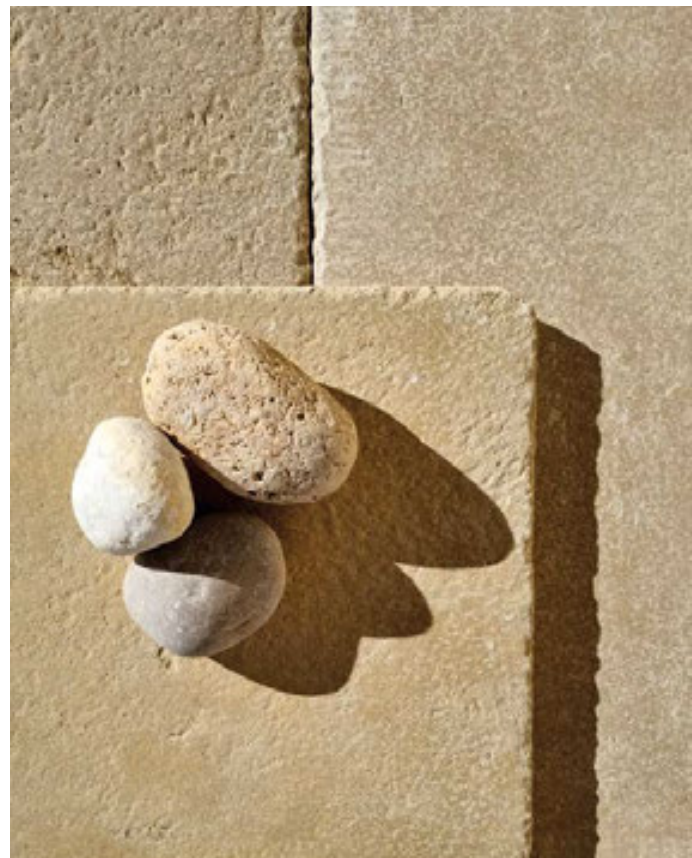
AUREAMATERIA

INSPIRACIÓN

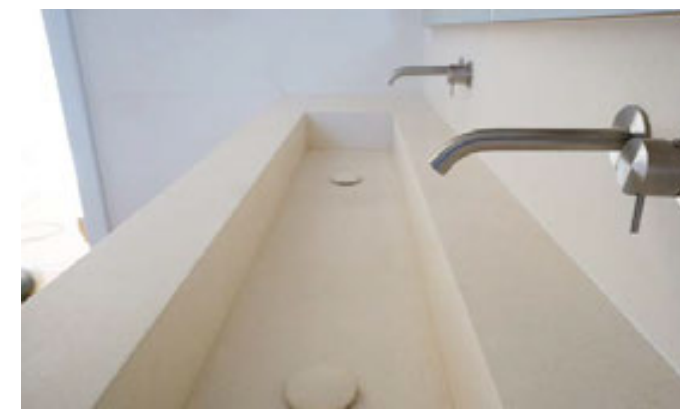
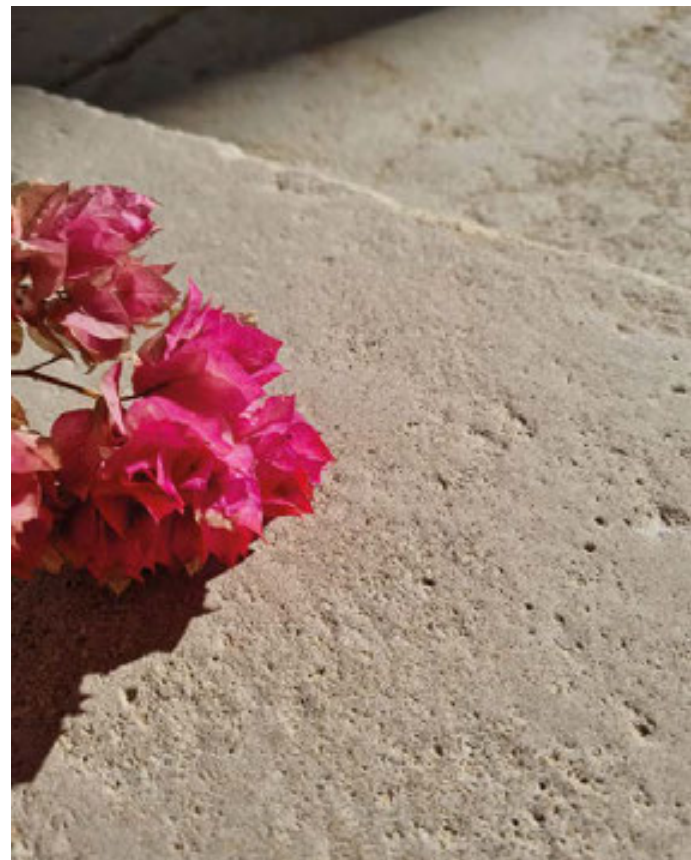


ÁUREA MATERIA





INSPIRACIÓN



ÄUREAMATERIA

INSPIRACIÓN



ÄUREA MATERIA



INSPIRACIÓN



ÀUREA MATERIA

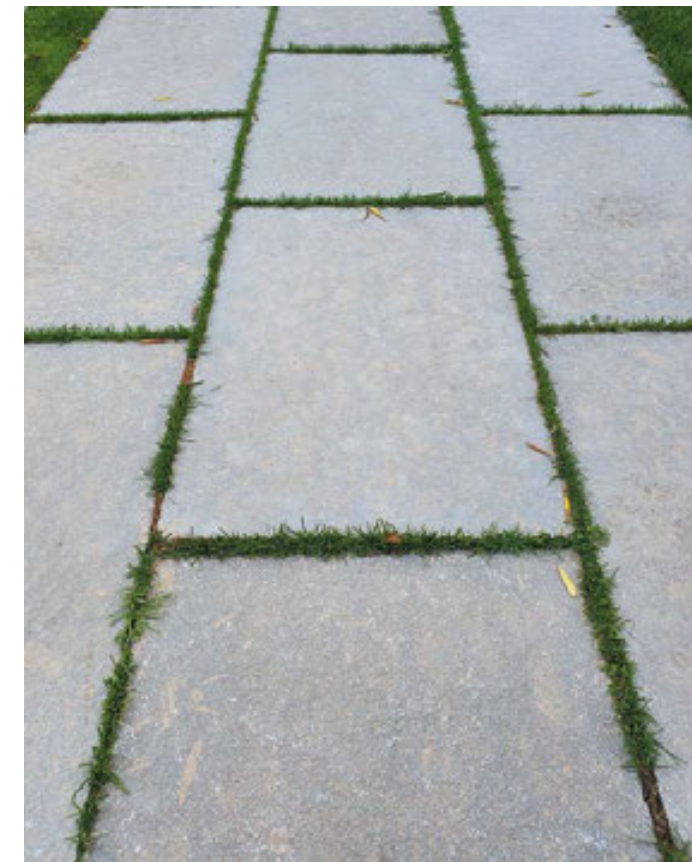
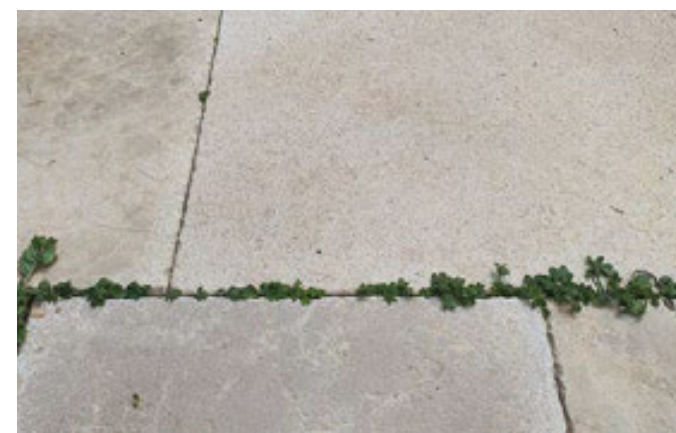




INSPIRACIÓN



ÁUREA MATERIA





INSTALACIÓN DE PIEDRA:

Combinar siempre piezas de diferentes palets.

SOLERÍAS Y PAREDES:

24 horas antes de pegar, sellar solamente la cara vista con HIDROREP de FILA SOLUTIONS.

Utilizar cemento-cola blanco adecuado para piedras calizas.

Doble encolado (solera y dorso de la pieza) sin dejar espacios huecos.

Utilizar junta adecuada y limpiar bien la superficie mientras aún esté húmeda.

Dejar secar y aplicar una mano final de FILA FOB XTREM en zonas de posibles manchas.

PLAYAS DE PISCINA:

Idem que lo anterior pero sustituyendo el hidrorep por SALVATERRAZZA ECO de FILA.

VASOS DE PISCINA:

Consultar al 667 580 169

No se admiten reclamaciones sobre material ya instalado.

MANTENIMIENTO DE PIEDRA:

En zonas de posibles manchas de aceites, recomendamos el uso periódico de FILA MATT diluido en el agua de fregar el suelo.

www.aureamateria.com



Áurea Materia es la marca de piedra natural para la arquitectura de Víctor Dols, S.L., con sede y almacén en Castellón.

Hemos desarrollado una colección de baldosas de piedras calizas seleccionadas por su comportamiento y belleza, dándoles el acabado superficial adecuado para potenciar su elegante carácter natural.

La mayoría de calizas que abundan en la corteza de la tierra actualmente se formaron durante el mesozoico a partir del sedimento marino de restos de corales y conchas.

Actualmente, estas piedras bien seleccionadas, trabajadas e instaladas, aportan a la arquitectura una autenticidad y belleza que va ganando en carácter con el paso del tiempo y están concebidas para durar muchas décadas como la hermosa piel de tus proyectos.

Víctor Dols S.L.
B12552774
Polígono 12 Font de Roc
12180 Cabanes (Castellón)
☎ ☎ +34 667 580 169
Info@aureamateria.com
www.aureamateria.com



ÂUREA MATERIA

www.aureamateria.com